

MEDIUM & DEEP SKIRTED CLOSURES

89-445-9913 S



Specifications:

DIAMETER 89 mm
THREAD PROFILE 445
NECK FINISH 89-445
CLOSURE TOP Stipple
CLOSURE SIDEWALL: Broad Ribbed
MATERIAL PP

PACKAGING & FREIGHT INFORMATION

| PACK TYPE | PCS/CTN | CTNS/PALT | PCS/PALT | CTN WT* | PALT WT* | FRT CLASS |
|--|---------|-----------|--|-------------------|--------------------|--------------------|
| Bulk | 480 | 15 | 7,200 | 17 ⁽¹⁾ | 255 ⁽¹⁾ | 150 ⁽¹⁾ |
| Bulk | 480 | 15 | 7,200 | 19 ⁽²⁾ | 285 ⁽²⁾ | 150 ⁽²⁾ |
| CARTON DIMENSIONS: 24 x 16 x 15 | | | PALLET DIMENSIONS: 48 x 40 x 50 | | | |

(1) Unlined Closures (2) Lined Closures *Approximate

MARKETS

Food, Food Service, Peanut Butter & Nuts, Personal Care & Cosmetics, Industrial and Agricultural Products, Dressings & Sauces.

CLOSURE BENEFITS

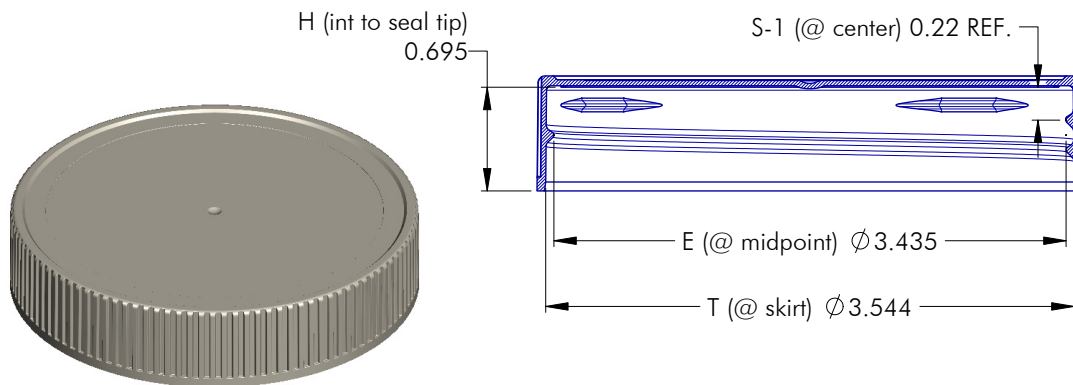
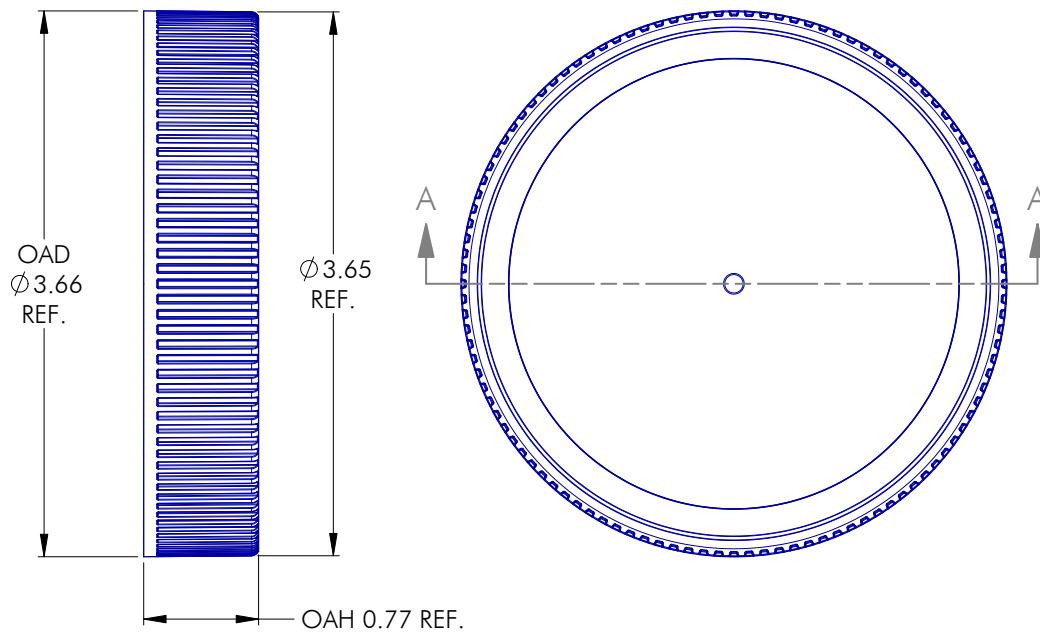
- Broad-ribbed sides are easier to grip
- Popular for peanut butter and nuts, mayonaisse products & dressings

OPTIONS

Available in white, standard colors and custom colors. Can be lined with a wide variety of liner systems including SureSeal (foam), pressure sensitive and heat induction (foil) liners. Liners can be cut with a pull-tab easy-open feature. Can be embossed/debossed with custom message. Offset printing is available in up to four colors.

MEDIUM & DEEP SKIRTED CLOSURES

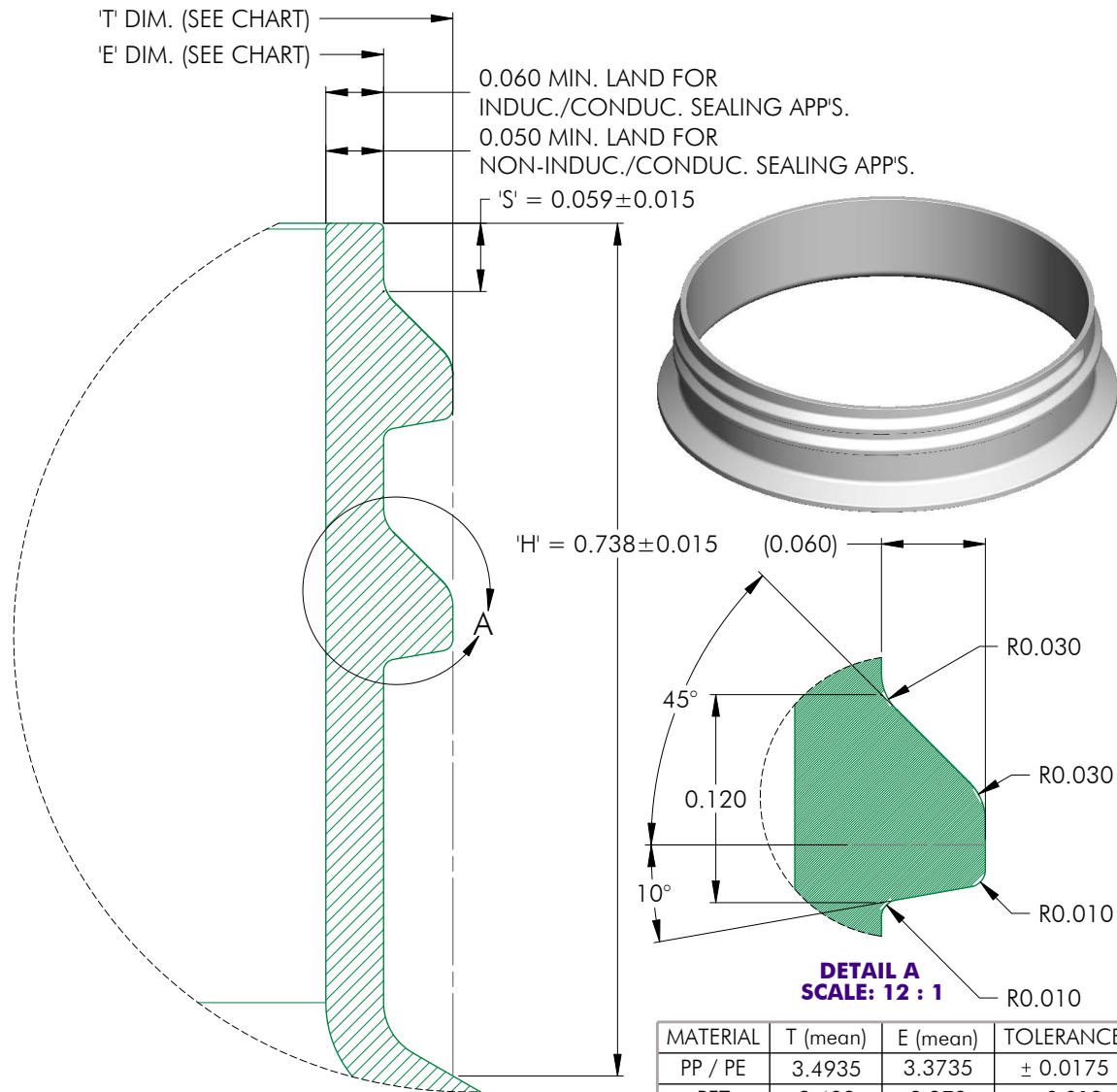
89-445-9913 S



| | | | | | |
|---|--|-------------------|----------|--------------------|-------------|
| NOTES: (UNLESS OTHERWISE SPECIFIED) | | 0 | 03.04.11 | Released | DN |
| 1. ALL DIMENSIONS ARE IN INCHES. | | REV | DATE | DESCRIPTION | BY |
| 2. SEE CHART FOR DIMENSIONAL TOLERANCE. | | TOLERANCE | | PITCH/TPI .200 / 5 | TURNS 1-3/8 |
| THIS OR FACSIMILE THEREOF IS THE EXCLUSIVE PROPERTY OF PHOENIX AND MAY NOT BE REPRODUCED WITHOUT THE EXPRESSED WRITTEN CONSENT OF PHOENIX. SOME OR ALL OF THE ITEMS DEPICTED ON THIS DRAWING MAY BE COVERED BY CURRENT PATENTS OR PATENTS APPLIED FOR BY PHOENIX. | | .X | ±0.1 | MAT'L | PP |
| | | .XX | ±0.02 | DRAWN | DMN |
| | | .XXX | ±0.010 | DATE | 03.04.11 |
| | | SCALE | | 1 : 1 | REV |
| | | 89 - 445 - 9913 S | | | |

MEDIUM & DEEP SKIRTED CLOSURES

89-445-9913 S



| MATERIAL | T (mean) | E (mean) | TOLERANCE |
|----------|----------|----------|-----------|
| PP / PE | 3.4935 | 3.3735 | ± 0.0175 |
| PET | 3.499 | 3.379 | ± 0.012 |
| GLASS | N/A | N/A | ± N/A |

| | | | | | |
|---|--|-----------|-----------|-------------------|----------|
| NOTES: (UNLESS OTHERWISE SPECIFIED) | | 0 | 10.19.07 | Released | DN |
| 1. ALL DIMENSIONS ARE IN INCHES. | | REV | DATE | DESCRIPTION | BY |
| 2. SEE CHART FOR DIMENSIONAL TOLERANCE. | | TOLERANCE | PITCH/TPI | 200 / 5 | TURNS |
| THIS OR FACSIMILE THEREOF IS THE EXCLUSIVE PROPERTY OF PHOENIX AND MAY NOT BE REPRODUCED WITHOUT THE EXPRESSED WRITTEN CONSENT OF PHOENIX. SOME OR ALL OF THE ITEMS DEPICTED ON THIS DRAWING MAY BE COVERED BY CURRENT PATENTS OR PATENTS APPLIED FOR BY PHOENIX. | | .X | ±0.1 | DRAWN | DMN |
| | | .XX | ±0.02 | DATE | 10.19.07 |
| | | .XXX | ±0.010 | SCALE | 8 : 1 |
| | | | | 89 - 445 - FINISH | 0 |