

89-400-9613 S



Specifications:

DIAMETER	89 mm
NECK FINISH	89-400
CLOSURE TOP	Stipple
CLOSURE SIDEWALL	Fine Ribbed
MATERIAL	PP, PCR PP

PACKAGING & FREIGHT INFORMATION

PACK TYPE	PCS/CTN	CTNS/PALT	PCS/PALT	CTN WT*	PALT WT*	FRT CLASS
Stack	624	15	9,360	20 ⁽¹⁾	305 ⁽¹⁾	175 ⁽¹⁾
Stack	624	15	9,360	24 ⁽²⁾	351 ⁽²⁾	125 ⁽²⁾
CARTON DIMENSIONS: 24 x 16 x 15			PALLET DIMENSIONS: 48 x 40 x 50			

(1) Unlined Closures (2) Lined Closures *Approximate

MARKETS

Food, Food Service, Agricultural, Automotive, Industrial and Medical Products, Dressings & Sauces, Personal Care & Cosmetics, Soup Base, Pharmaceuticals, Nutraceuticals & Powdered Drinks

CLOSURE BENEFITS

- A great general-purpose closure
- Fine-ribbed sides are easy to grip
- Our most popular closure style

OPTIONS

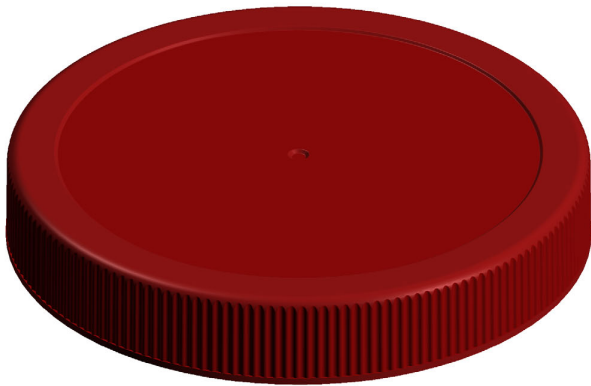
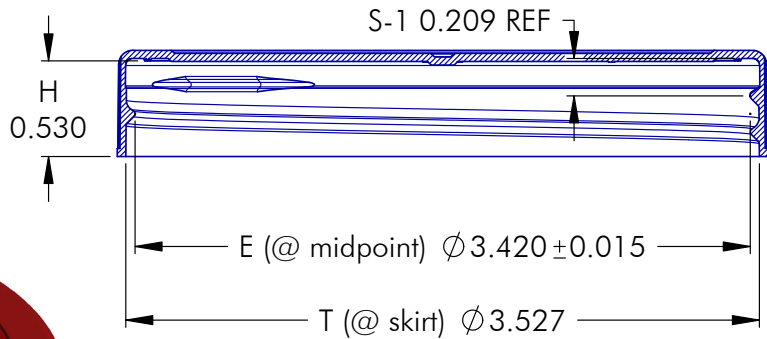
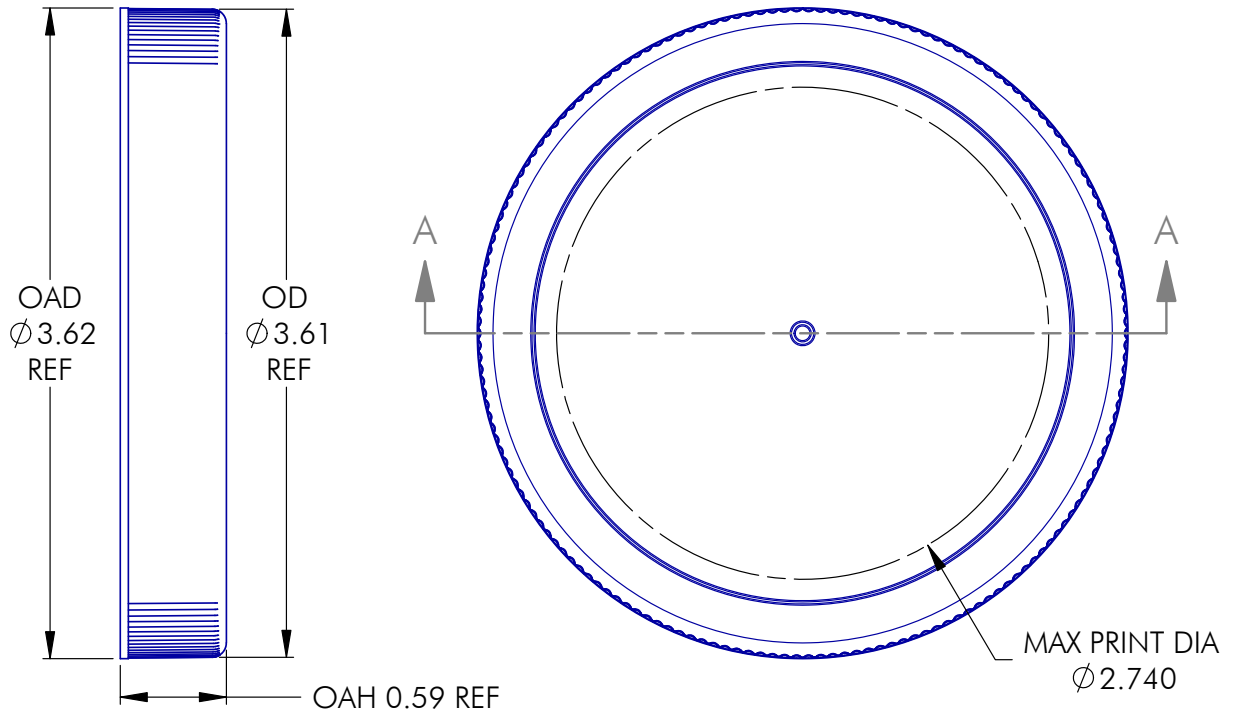
Available in white, standard, and custom colors. Liners can be cut with a tri-tab easy-open feature. Offset printing is available on this closure in up to four colors. Multiple PCR materials available with food-contact and non-food options up to 100% PCR content.



PHOENIX™

PHXPKG.COM

P 630 420 4750 E greatpkg@phxpkg.com
975 Meridian Lake Drive • Aurora, IL 60504



NOTES: (UNLESS OTHERWISE SPECIFIED)
 1. ALL DIMENSIONS ARE IN INCHES.
 2. SEE CHART FOR DIMENSIONAL TOLERANCE.

THIS OR FACSIMILE THEREOF IS THE EXCLUSIVE PROPERTY OF PHOENIX AND MAY NOT BE REPRODUCED WITHOUT THE EXPRESSED WRITTEN CONSENT OF PHOENIX. SOME OR ALL OF THE ITEMS DEPICTED ON THIS DRAWING MAY BE COVERED BY CURRENT PATENTS OR PATENTS APPLIED FOR BY PHOENIX.

7	03.10.25	Re-defined E Dimension			LD
REV	DATE	DESCRIPTION			BY
TOLERANCE	PITCH/TPI	.200 / 5	TURNS	1-3/16	MAT'L PP
.X ±0.1	DRAWN	DMN	DATE	07.27.06	SCALE 1 : 1
.XX ±0.02	089 - 400 - 9613 S				REV
.XXX ±0.010					7

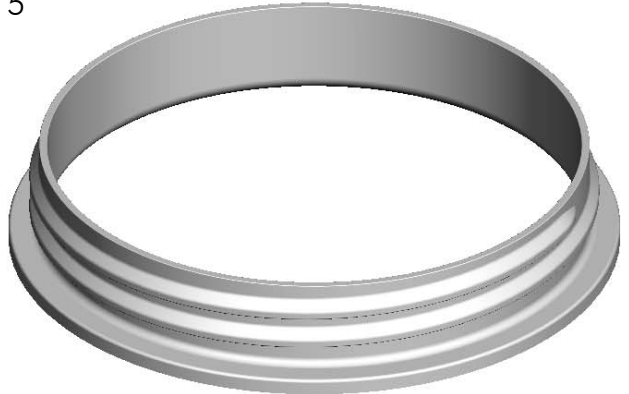
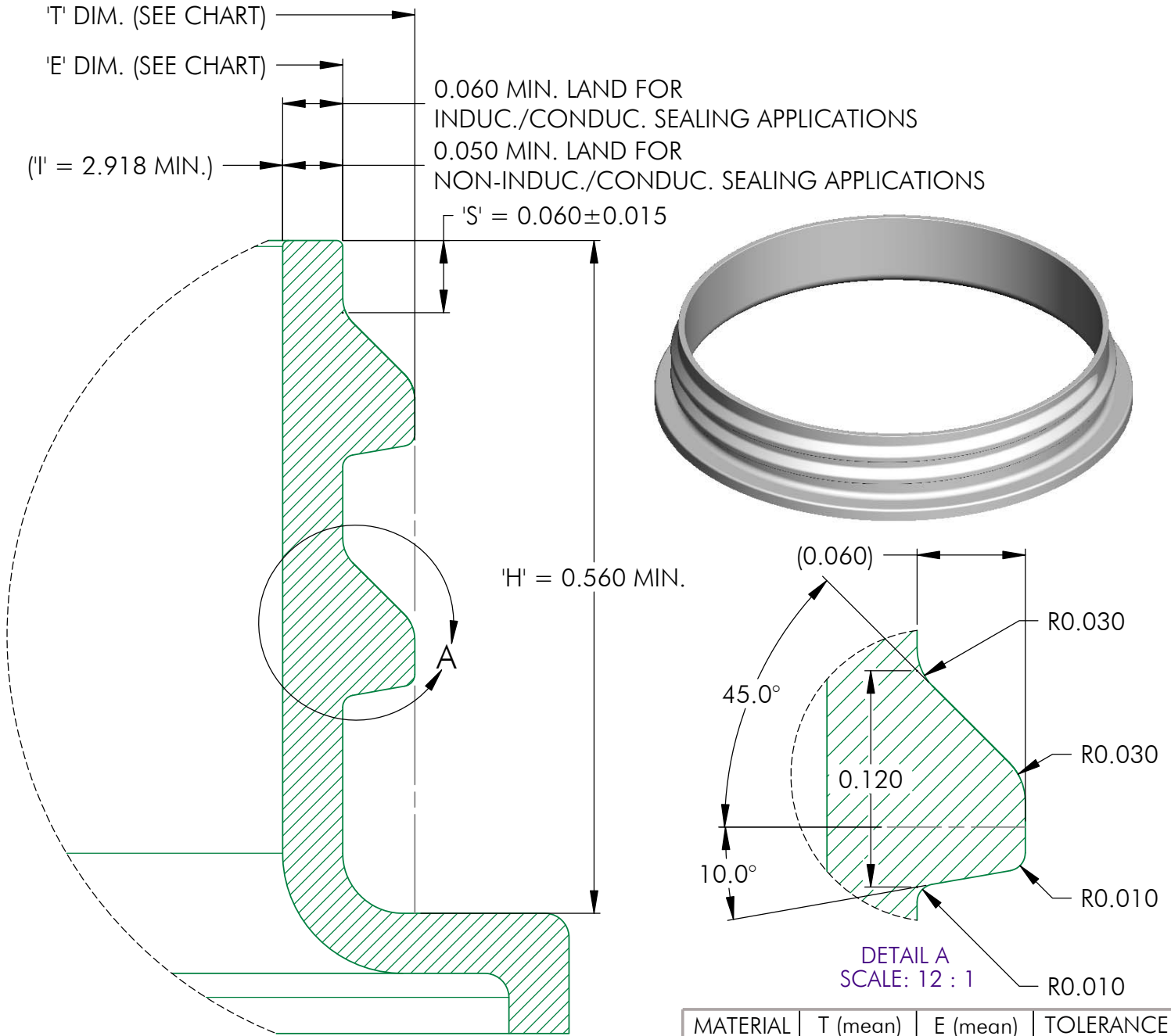


PHOENIX™

PHXPKG.COM

P 630 420 4750 E greatpkg@phxpkg.com
 975 Meridian Lake Drive • Aurora, IL 60504

SHALLOW SKIRTED CLOSURES



MATERIAL	T (mean)	E (mean)	TOLERANCE
PP / PE	3.4935	3.3735	± 0.0175
PET	3.499	3.379	± 0.012
GLASS	N/A	N/A	± N/A

NOTES: (UNLESS OTHERWISE SPECIFIED) 1. ALL DIMENSIONS ARE IN INCHES. 2. SEE CHART FOR DIMENSIONAL TOLERANCE. THIS OR FACSIMILE THEREOF IS THE EXCLUSIVE PROPERTY OF PHOENIX AND MAY NOT BE REPRODUCED WITHOUT THE EXPRESSED WRITTEN CONSENT OF PHOENIX. SOME OR ALL OF THE ITEMS DEPICTED ON THIS DRAWING MAY BE COVERED BY CURRENT PATENTS OR PATENTS APPLIED FOR BY PHOENIX.	0	10.22.17	Released		DN
	REV	DATE	DESCRIPTION		BY
	TOLERANCE	PITCH/TPI .200 / 5		URNS 1-1/2	MAT'L SEE CHART
	.X ±0.1	DRAWN DMN	DATE 10.22.07	SCALE 8 : 1	REV
	.XX ±0.02	89 - 400 - FINISH			0
.XXX ±0.010					



PHXPKG.COM

P 630 420 4750 E greatpkg@phxpkg.com
 975 Meridian Lake Drive • Aurora, IL 60504