

63-S01 BUTTRESS STYLE CLOSURES

63-S01-TESW U



Specifications:

DIAMETER 63 mm

THREAD PROFILE S01

NECK FINISH 63-S01

CLOSURE TOP Embossed "Shake Well"

MATERIAL PP

PACKAGING & FREIGHT INFORMATION

PACK TYPE	PCS/CTN	CTNS/PALT	PCS/PALT	CTN WT*	PALT WT*	FRT CLASS
Bulk	475	15	7,125	22 ⁽¹⁾	329 ⁽¹⁾	125 ⁽¹⁾
Bulk	475	15	7,125	23 ⁽²⁾	349 ⁽²⁾	125 ⁽²⁾
CARTON DIMENSIONS: 24 x 16 x 15				PALLET DIMENSIONS: 48 x 40 x 50		

(1) Unlined Closures (2) Lined Closures *Approximate

MARKETS

Food, Food Oil/Service, Household Chemicals, Automotive, Agricultural, and Industrial Products

OPTIONS

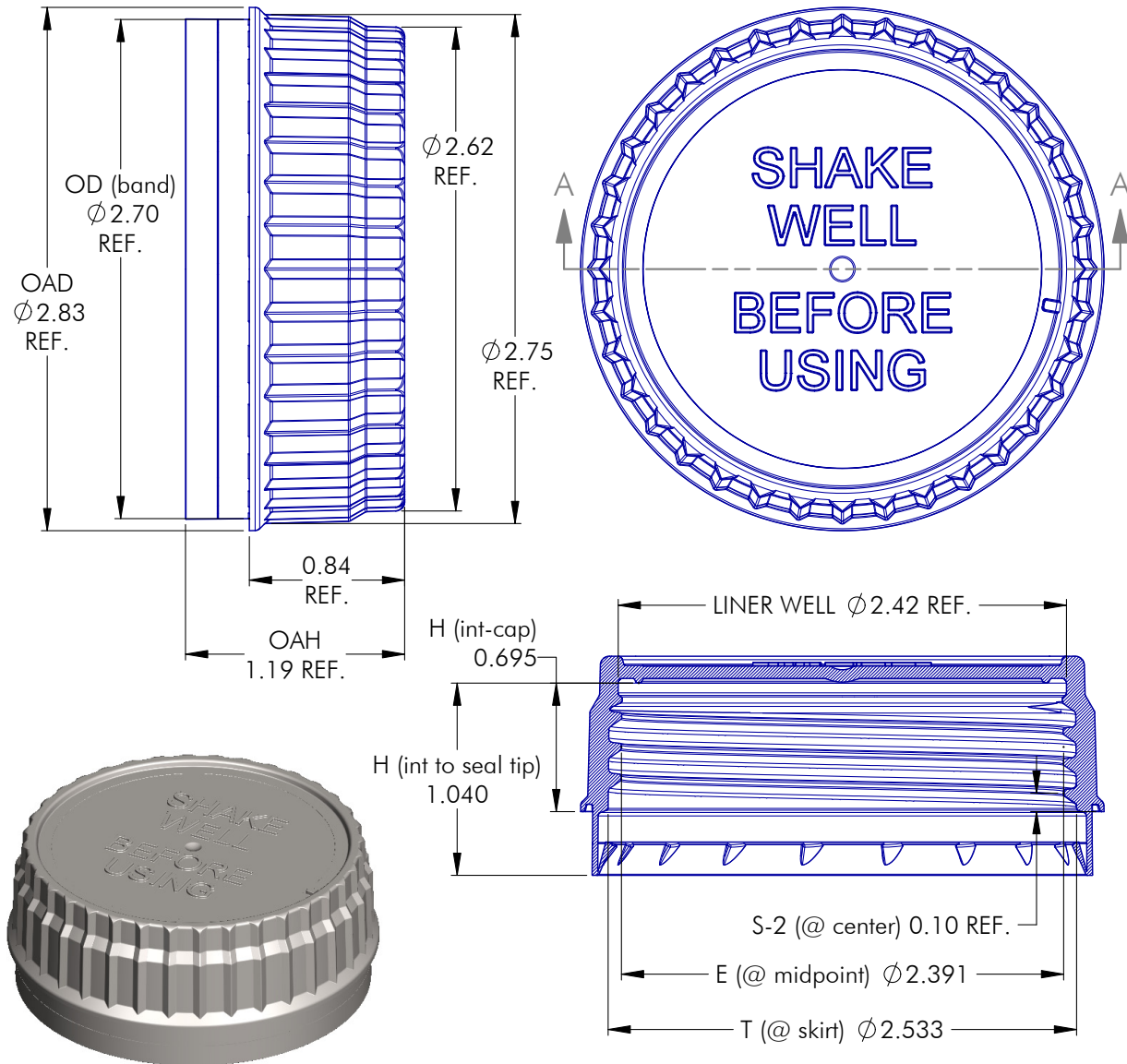
Available in white, standard colors and custom colors.

CLOSURE BENEFITS

- Tamper evident feature
- Embossed Text:
Shake Well Before Using
- A proven closure for the Food Oil and Agricultural Chemical markets
- Easy-to-grip defined ribs

63-S01 BUTTRESS STYLE CLOSURES

63-S01-TESW U



NOTES: (UNLESS OTHERWISE SPECIFIED)
1. ALL DIMENSIONS ARE IN INCHES.
2. SEE CHART FOR DIMENSIONAL TOLERANCE.

THIS OR FACSIMILE THEREOF IS THE EXCLUSIVE PROPERTY OF PHOENIX AND MAY NOT BE REPRODUCED WITHOUT THE EXPRESSED WRITTEN CONSENT OF PHOENIX. SOME OR ALL OF THE ITEMS DEPICTED ON THIS DRAWING MAY BE COVERED BY CURRENT PATENTS OR PATENTS APPLIED FOR BY PHOENIX.

5	09.12.17	Update Dimensions			DA
REV	DATE	DESCRIPTION			BY
TOLERANCE	PITCH/TPI	.167 / 6	TURNS	~2	MAT'L PP
.X ± 0.1	DRAWN	DMN	DATE	08.19.13	SCALE 1-1/4 : 1
.XX ± 0.02	63 - S01 - TESW U				REV
.XXX ± 0.010					5



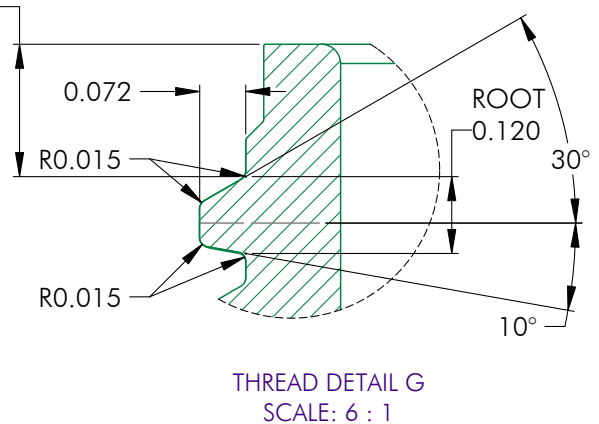
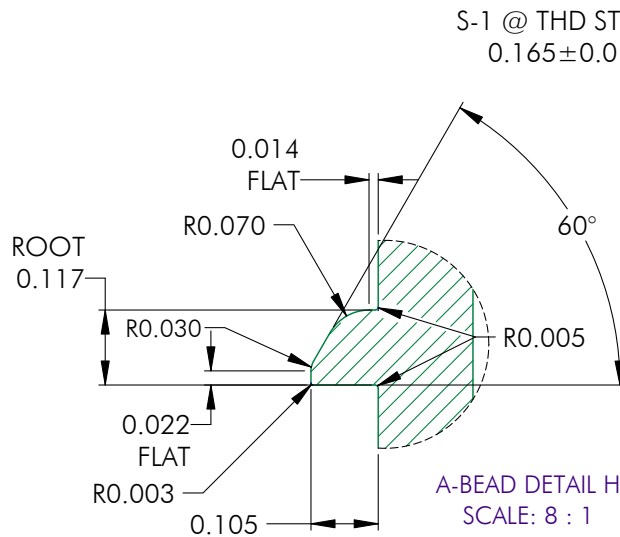
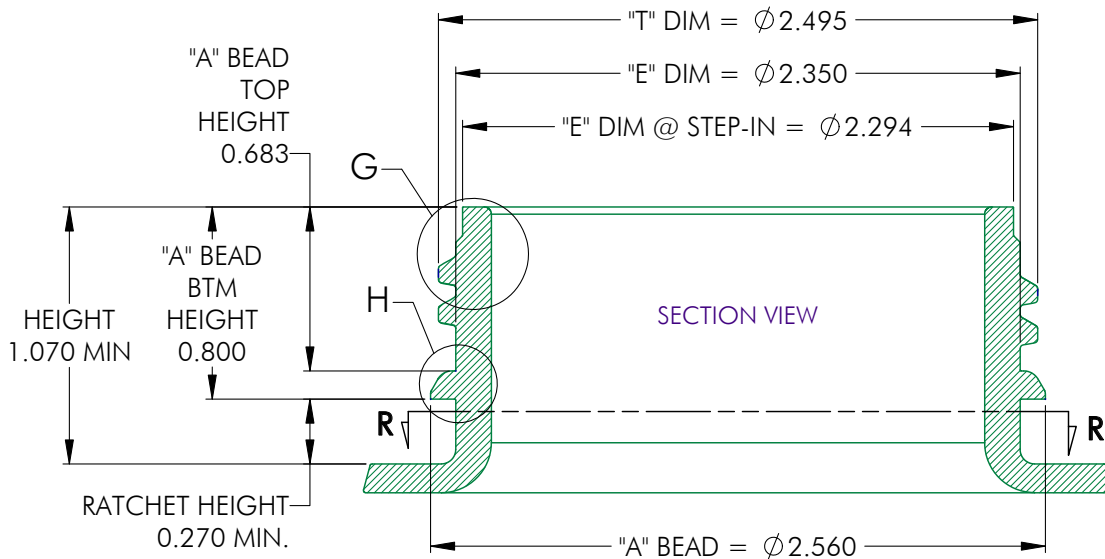
PHOENIX™

PHXPKG.COM

P 630 420 4750 E greatpkg@phxpkg.com
975 Meridian Lake Drive • Aurora, IL 60504

63-S01 BUTTRESS STYLE CLOSURES

63-S01-TESW U



Sheet 1 of 2

NOTES: (UNLESS OTHERWISE SPECIFIED)
1. ALL DIMENSIONS ARE IN INCHES.
2. SEE CHART FOR DIMENSIONAL TOLERANCE.

THIS OR FACSIMILE THEREOF IS THE EXCLUSIVE PROPERTY OF PHOENIX AND MAY NOT BE REPRODUCED WITHOUT THE EXPRESSED WRITTEN CONSENT OF PHOENIX. SOME OR ALL OF THE ITEMS DEPICTED ON THIS DRAWING MAY BE COVERED BY CURRENT PATENTS OR PATENTS APPLIED FOR BY PHOENIX.

4	11.15.22	Updated Section R-R direction	TCS
3	03.29.19	Corrected "S-1 @ THD STRT" Dimension	DN
2	12.08.15	Added Ratchet Detail B and Sect. RR arrows	TS
REV	DATE	DESCRIPTION	BY
TOLERANCE PITCH/TPI .167 / 6 TURNS 2 MAT'L HDPE			
.X	±0.1	DRAWN DAA DATE 03.11.13 SCALE 3 : 1	REV
.XX	±0.02	63 - S01 - TE FINISH	
.XXX	±0.010		
			4



PHOENIX™

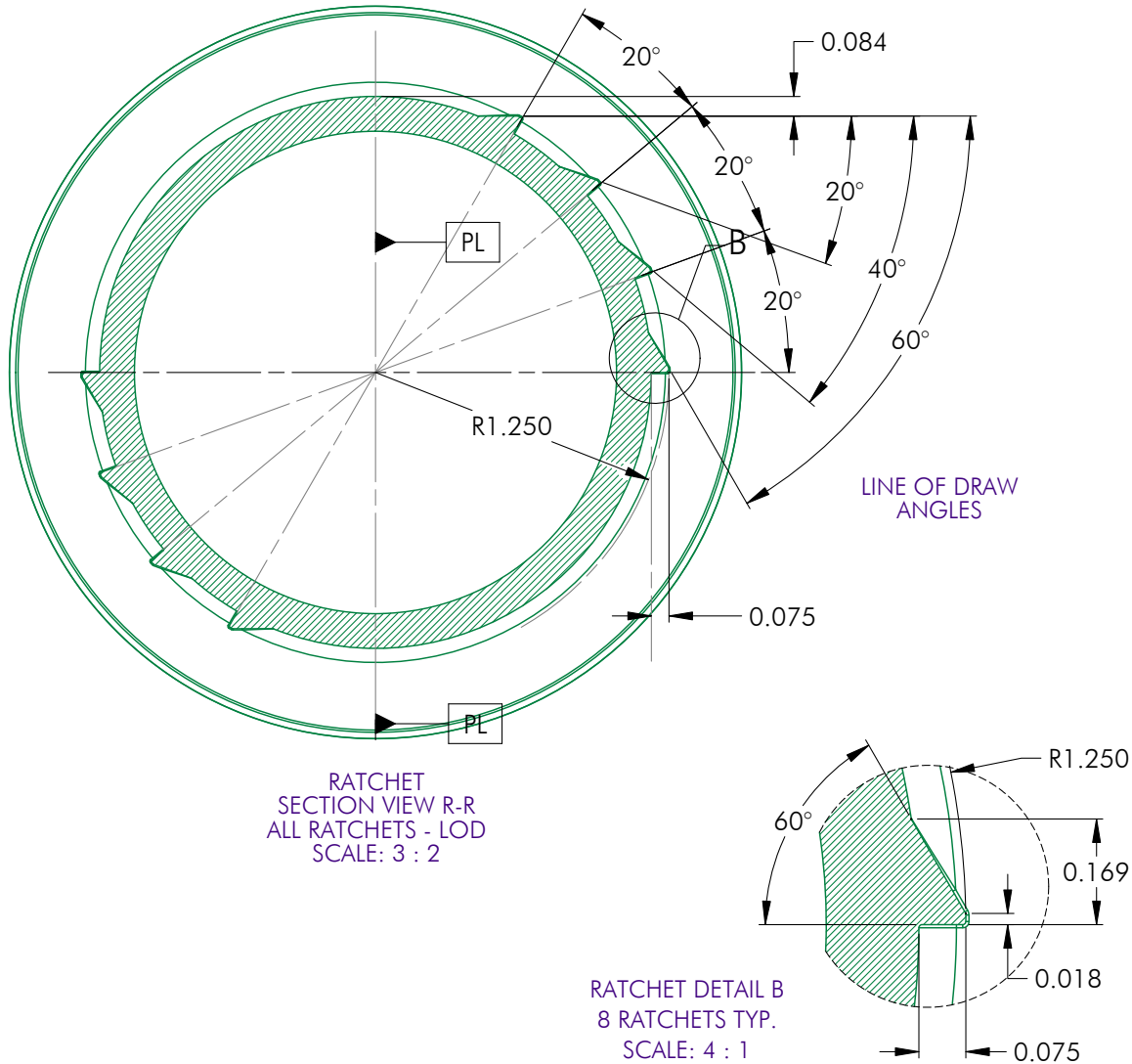
PHXPKG.COM

P 630 420 4750 E greatpkg@phxpkg.com
975 Meridian Lake Drive • Aurora, IL 60504

2024.01.03

63-S01 BUTTRESS STYLE CLOSURES

63-S01-TESW U



Sheet 2 of 2

<div>NOTES: (UNLESS OTHERWISE SPECIFIED) 1. ALL DIMENSIONS ARE IN INCHES. 2. SEE CHART FOR DIMENSIONAL TOLERANCE.</div>	4	11.15.22	Updated Section R-R direction			TCS				
	3	03.29.19	Corrected "S-1 @ THD STRT" Dimension			DN				
	2	12.08.15	Added Ratchet Detail B and Sect. RR arrows			TS				
	REV	DATE	DESCRIPTION			BY				
<div>THIS OR FACSIMILE THEREOF IS THE EXCLUSIVE PROPERTY OF PHOENIX AND MAY NOT BE REPRODUCED WITHOUT THE EXPRESSED WRITTEN CONSENT OF PHOENIX. SOME OR ALL OF THE ITEMS DEPICTED ON THIS DRAWING MAY BE COVERED BY CURRENT PATENTS OR PATENTS APPLIED FOR BY PHOENIX.</div>	TOLERANCE		PITCH/TPI		.167 / 6	TURNS	2	MAT'L	HDPE	
	.X	±0.1	DRAWN		DAA	DATE	03.11.13	SCALE	3 : 1	REV
	.XX	±0.02	63 - S01 - TE FINISH							
	.XXX	±0.010								

4