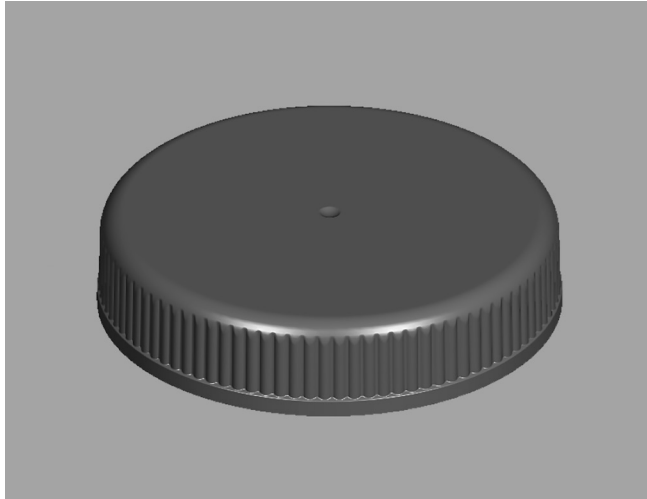


VISTA CHILD-RESISTANT CLOSURES

63-CRC-STBK A



Specifications:

- DIAMETER** 63 mm
- NECK FINISH** 63-400
- CLOSURE TOP** Stipple
- CLOSURE SIDEWALL** Wide Ribbed
- MATERIAL** PP, PCR PP

PACKAGING & FREIGHT INFORMATION

PACK TYPE	PCS/CTN	CTNS/PALT	PCS/PALT	CTN WT*	PALT WT*	FRT CLASS
Bulk	1,000	15	15,000	32 ⁽¹⁾	480 ⁽¹⁾	100 ⁽¹⁾
Bulk	1,000	15	15,000	32 ⁽²⁾	480 ⁽²⁾	100 ⁽²⁾
CARTON DIMENSIONS: 24 x 16 x 15			PALLET DIMENSIONS: 48 x 40 x 50			

(1) Unlined Closures (2) Lined Closures *Approximate

MARKETS

Vitamins, Nutraceuticals, Pharmaceuticals, Supplements, Agricultural, Automotive, Household Chemicals, Cosmetics, Industrial, Cannabis, and Nutritional Powders

OPTIONS

Available in white, standard, and custom colors. Can be lined with a wide variety of liner systems including SureSeal (foam), pressure sensitive. Multiple PCR materials available with food-contact and non-food options up to 100% PCR.

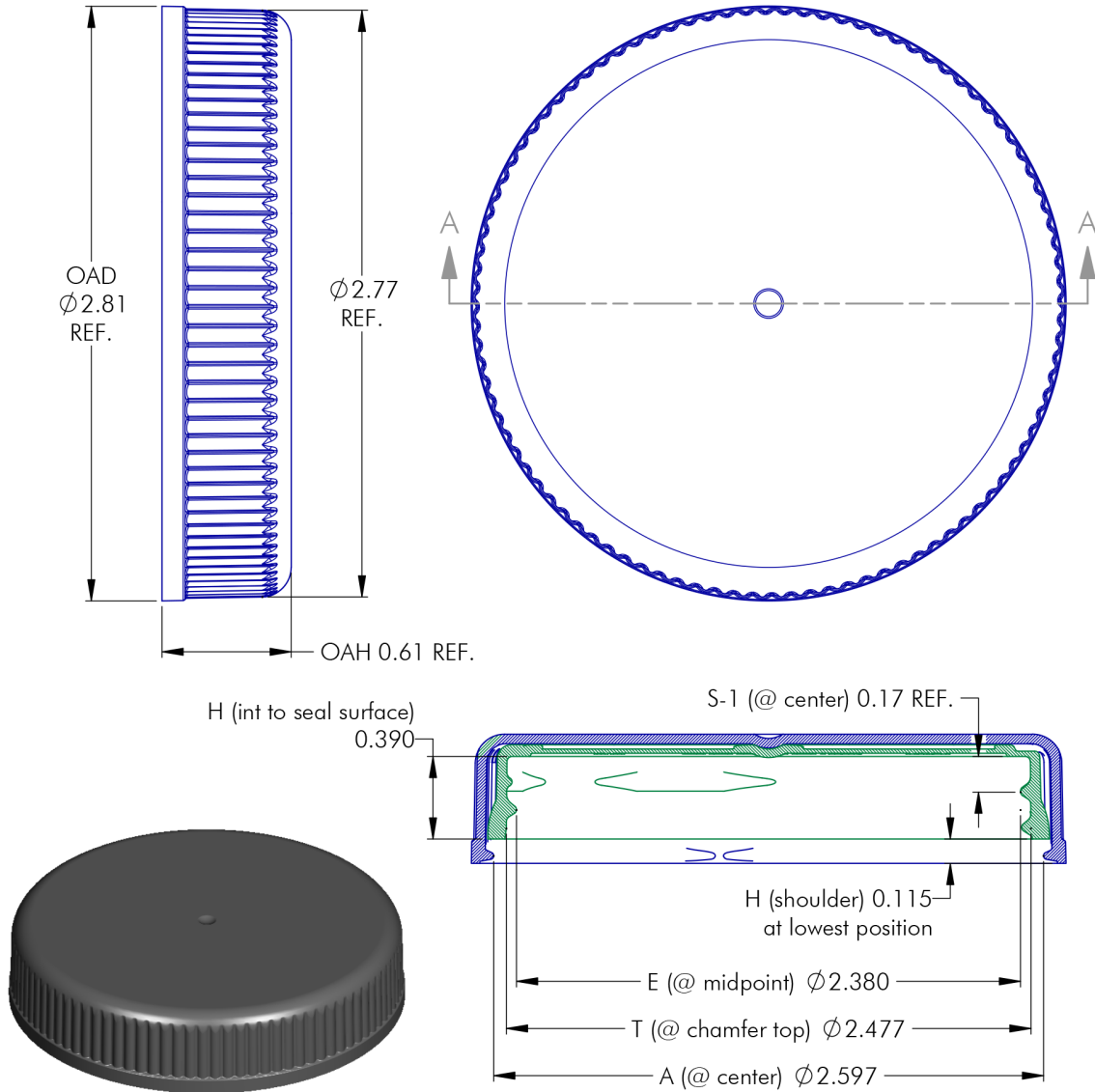
CLOSURE BENEFITS

- Offers child-resistance feature
- Vista® 2-piece CRC
- Push-and-turn
- Popular for vitamins & nutraceuticals
- Blank Top

For blank CRC closures, the customer is responsible for providing opening and closing instructions with the final package upon sale

VISTA CHILD-RESISTANT CLOSURES

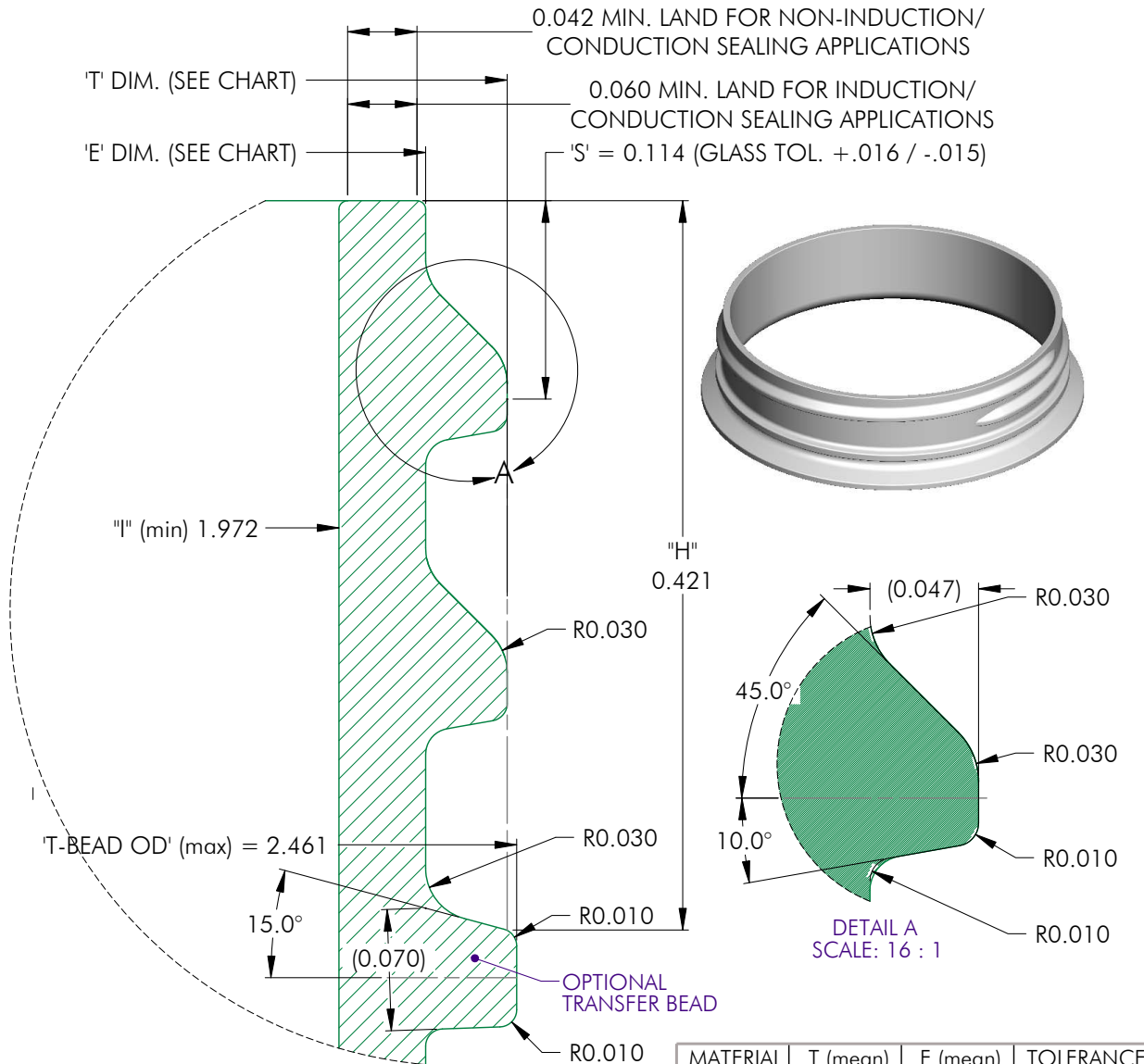
63-CRC-STBK A



NOTES: (UNLESS OTHERWISE SPECIFIED) 1. ALL DIMENSIONS ARE IN INCHES. 2. SEE CHART FOR DIMENSIONAL TOLERANCE.				4	11.04.19	Adjust OD of Inner Component Mold	DN
REV	DATE	DESCRIPTION			BY		
TOLERANCE		PITCH/TPI .167 / 6	TURNS 356°	MAT'L PP			
.X	±0.1	DRAWN DMN	DATE 09.02.16	SCALE 3 : 2	REV		
.XX	±0.02	63 - CRC - STBK S			4		
.XXX	±0.010						

VISTA CHILD-RESISTANT CLOSURES

63-CRC-STBK A



MATERIAL	T (mean)	E (mean)	TOLERANCE
PP / PE	2.4435	2.3495	± 0.0175
PET	2.451	2.357	± 0.010
GLASS	0.0000	0.0000	± 0.0000

<p>NOTES: (UNLESS OTHERWISE SPECIFIED) 1. ALL DIMENSIONS ARE IN INCHES. 2. SEE CHART FOR DIMENSIONAL TOLERANCE.</p> <p>THIS OR FACSIMILE THEREOF IS THE EXCLUSIVE PROPERTY OF PHOENIX AND MAY NOT BE REPRODUCED WITHOUT THE EXPRESSED WRITTEN CONSENT OF PHOENIX. SOME OR ALL OF THE ITEMS DEPICTED ON THIS DRAWING MAY BE COVERED BY CURRENT PATENTS OR PATENTS APPLIED FOR BY PHOENIX.</p>	0	09.08.07	Released	DN					
	REV	DATE	DESCRIPTION	BY					
	TOLERANCE	PITCH/TPI	6 / 0	TURNS	1-1/2	MAT'L	SEE CHART		
	.X	±0.1	DRAWN	DMN	DATE	09.08.07	SCALE	12 : 1	REV
.XX	±0.02	63 - 400 - FINISH							
.XXX	±0.010								