

MEDIUM & DEEP SKIRTED CLOSURES

56-445-4901 S



Specifications:

DIAMETER 56 mm
NECK FINISH 56-445
CLOSURE TOP Stipple
CLOSURE SIDEWALL: Broad Ribbed
MATERIAL PP

PACKAGING & FREIGHT INFORMATION

| PACK TYPE | PCS/CTN | CTNS/PALT | PCS/PALT | CTN WT* | PALT WT* | FRT CLASS |
|--|---------|-----------|--|-------------------|--------------------|--------------------|
| Bulk | 1,075 | 15 | 16,125 | 23 ⁽¹⁾ | 350 ⁽¹⁾ | 125 ⁽¹⁾ |
| Bulk | 1,200 | 15 | 18,000 | 29 ⁽²⁾ | 437 ⁽²⁾ | 100 ⁽²⁾ |
| CARTON DIMENSIONS: 24 x 16 x 15 | | | PALLET DIMENSIONS: 48 x 40 x 50 | | | |

(1) Unlined Closures (2) Lined Closures *Approximate

MARKETS

Food, Personal Care & Cosmetics

CLOSURE BENEFITS

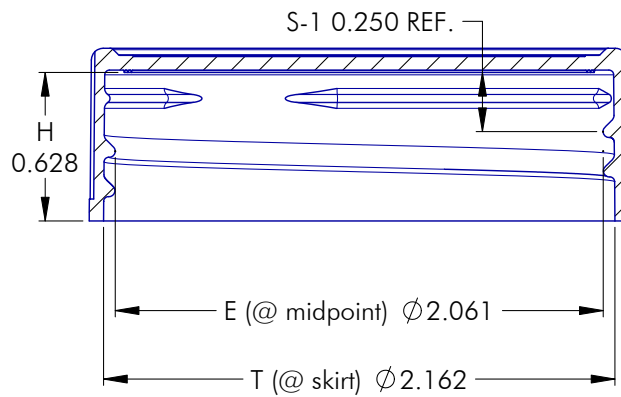
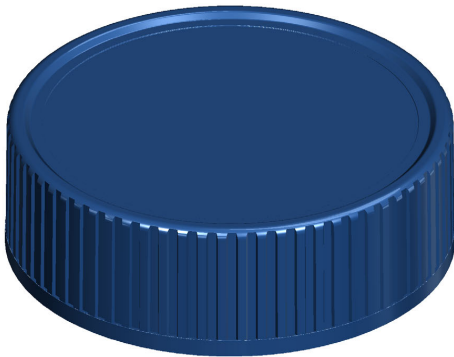
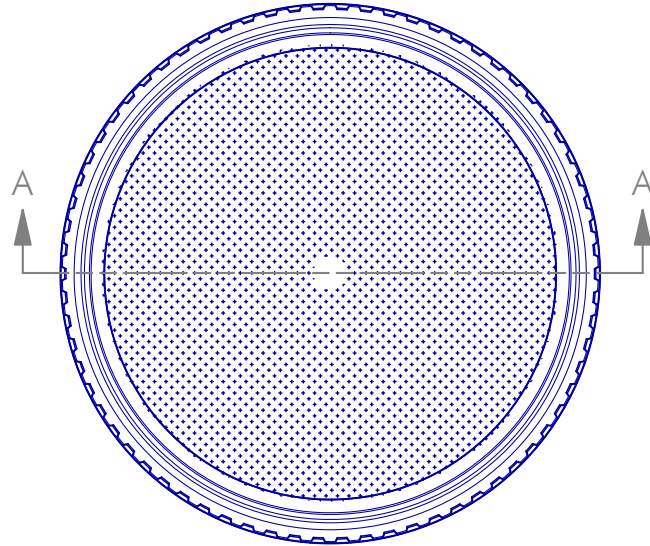
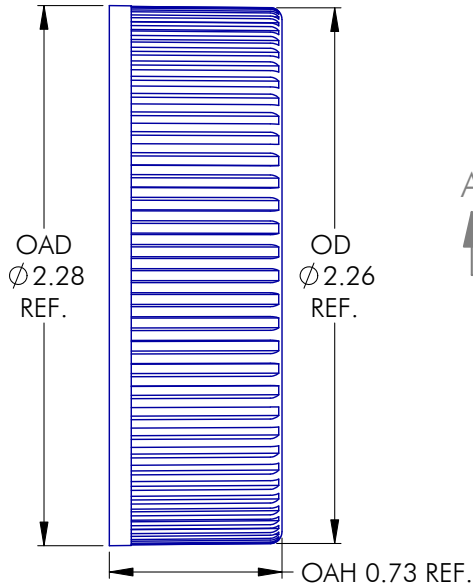
- Broad-ribbed sides are easier to grip
- Deep skirted closure

OPTIONS

Available in white, standard colors, and custom colors. Can be lined with a wide variety of liner systems including SureSeal (foam), pressure sensitive, and heat induction (foil) liners. Can be embossed/debossed with custom message. Offset printing is available in up to three colors.

MEDIUM & DEEP SKIRTED CLOSURES

56-445-4901 S



NOTES: (UNLESS OTHERWISE SPECIFIED)
1. ALL DIMENSIONS ARE IN INCHES.
2. SEE CHART FOR DIMENSIONAL TOLERANCE.

THIS OR FACSIMILE THEREOF IS THE EXCLUSIVE PROPERTY OF PHOENIX AND MAY NOT BE REPRODUCED WITHOUT THE EXPRESSED WRITTEN CONSENT OF PHOENIX. SOME OR ALL OF THE ITEMS DEPICTED ON THIS DRAWING MAY BE COVERED BY CURRENT PATENTS OR PATENTS APPLIED FOR BY PHOENIX.

| | | | | | |
|-----------|-----------|------------------------------|-------|-------|----------|
| 2 | 08.07.24 | Modified LRB length ECN#3014 | | | LD |
| REV | DATE | DESCRIPTION | | | BY |
| TOLERANCE | PITCH/TPI | .167 / 6 | TURNS | 1-1/2 | MAT'L PP |
| .X | ±0.1 | DRAWN | BEZ | DATE | 12.01.94 |
| .XX | ±0.02 | SCALE | | 3 : 2 | REV |
| .XXX | ±0.010 | 056 - 445 - 4901 S | | | 2 |

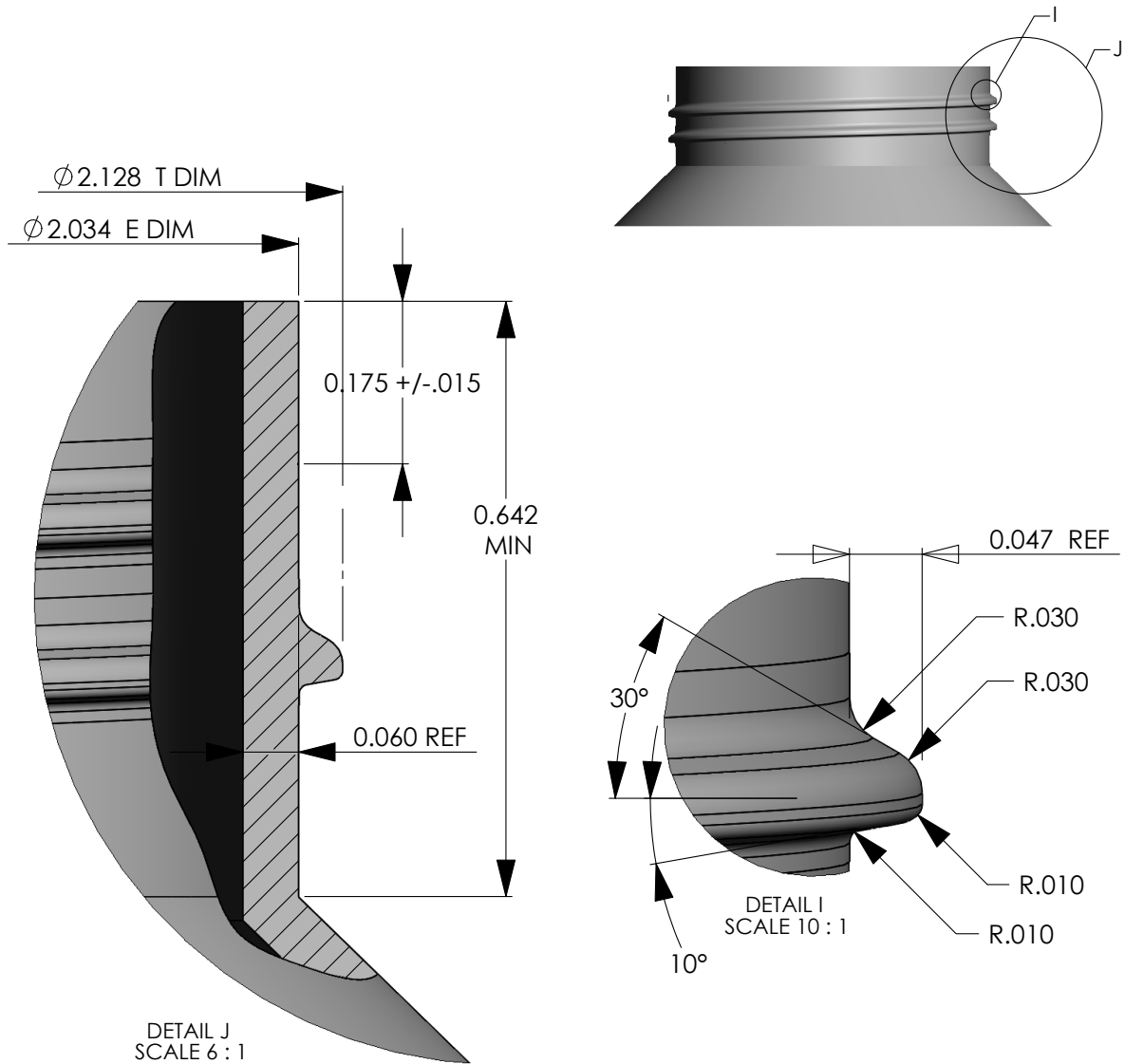

PHOENIX™

PHXPKG.COM

 P 630 420 4750 E greatpkg@phxpkg.com
 975 Meridian Lake Drive • Aurora, IL 60504

MEDIUM & DEEP SKIRTED CLOSURES

56-445-4901 S



| MATERIAL | T (mean) | E (mean) | TOLERANCE |
|----------|----------|----------|-----------|
| PP / PE | 2.128 | 2.034 | ± .0175 |
| PET | 2.128 | 2.034 | ± .012 |
| GLASS | 0.0000 | 0.0000 | ± 0.0000 |

| | | | | | | | | | |
|--|-----------|-----------|--------------------------|-------|-------|----------|-------|-------|-----|
| <p>NOTES: (UNLESS OTHERWISE SPECIFIED) 1. ALL DIMENSIONS ARE IN INCHES. 2. SEE CHART FOR DIMENSIONAL TOLERANCE.</p> <p>THIS OR FACSIMILE THEREOF IS THE EXCLUSIVE PROPERTY OF PHOENIX AND MAY NOT BE REPRODUCED WITHOUT THE EXPRESSED WRITTEN CONSENT OF PHOENIX. SOME OR ALL OF THE ITEMS DEPICTED ON THIS DRAWING MAY BE COVERED BY CURRENT PATENTS OR PATENTS APPLIED FOR BY PHOENIX.</p> | 0 | 01.14.05 | Released | DN | | | | | |
| | REV | DATE | DESCRIPTION | BY | | | | | |
| | TOLERANCE | PITCH/TPI | .167 / 6 | TURNS | 0-0/0 | MAT'L | XXX | | |
| | .X | ±0.1 | DRAWN | BEZ | DATE | 01.14.05 | SCALE | 2 : 1 | REV |
| | .XX | ±0.02 | 56 - 445 - FINISH | | | | 0 | | |
| .XXX | ±0.010 | | | | | | | | |