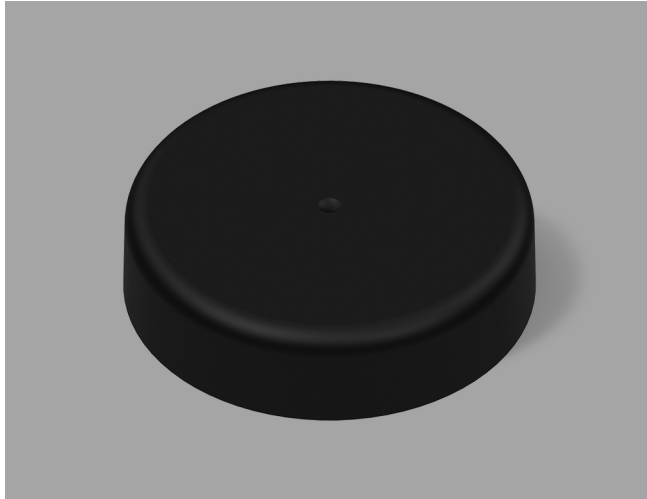


VISTA CHILD-RESISTANT CLOSURES

53-CRC-SMBK A



Specifications:

DIAMETER 53 mm

THREAD PROFILE CRC

NECK FINISH 53-CRC

CLOSURE TOP Smatte™

CLOSURE SIDEWALL Smatte™

MATERIAL PP, PCR PP

PACKAGING & FREIGHT INFORMATION

PACK TYPE	PCS/CTN	CTNS/PALT	PCS/PALT	CTN WT*	PALT WT*	FRT CLASS
Bulk	1,200	15	18,000	34 ⁽¹⁾	516 ⁽¹⁾	100 ⁽¹⁾
Bulk	1,200	15	18,000	34 ⁽²⁾	516 ⁽²⁾	100 ⁽²⁾
CARTON DIMENSIONS: 24 x 16 x 15			PALLET DIMENSIONS: 48 x 40 x 50			

(1) Unlined Closures (2) Lined Closures *Approximate

MARKETS

Vitamins, Nutraceuticals, Pharmaceuticals, Supplements, Agricultural Products, Automotive Products, Household Chemicals, Cosmetics, Industrial Products, Cannabis, and Nutritional Powders

OPTIONS

Available in white, standard, and custom colors. Can be lined with a wide variety of liner systems including SureSeal (foam). Optional 25-30% food-contact safe PCR PP material available.

CLOSURE BENEFITS

- Patented Smatte™ finish for a sleek look
- Offers child-resistance feature
- Vista® 2-piece CRC
- Push-and-turn
- Popular for vitamins & nutraceuticals
- Blank Top

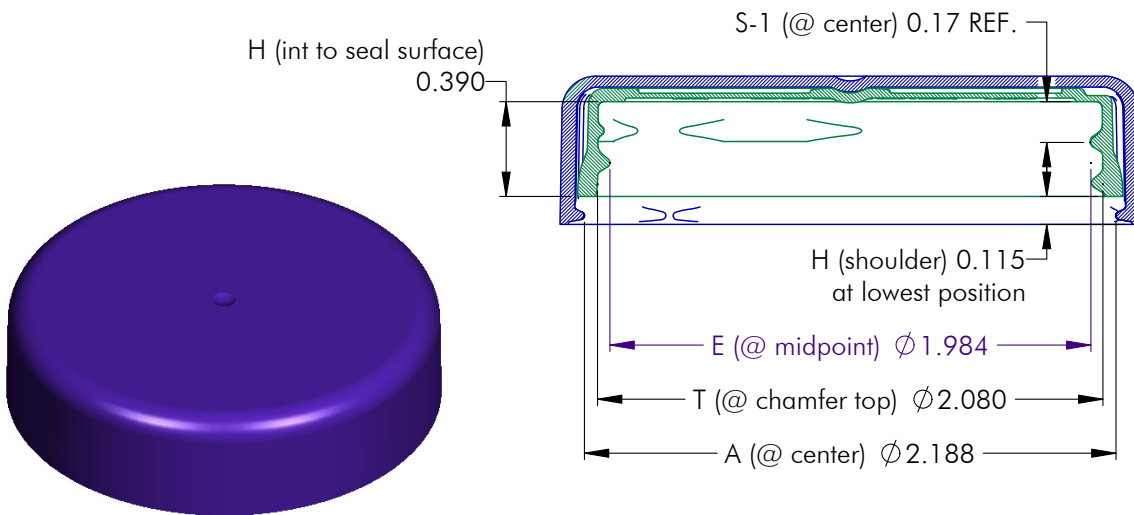
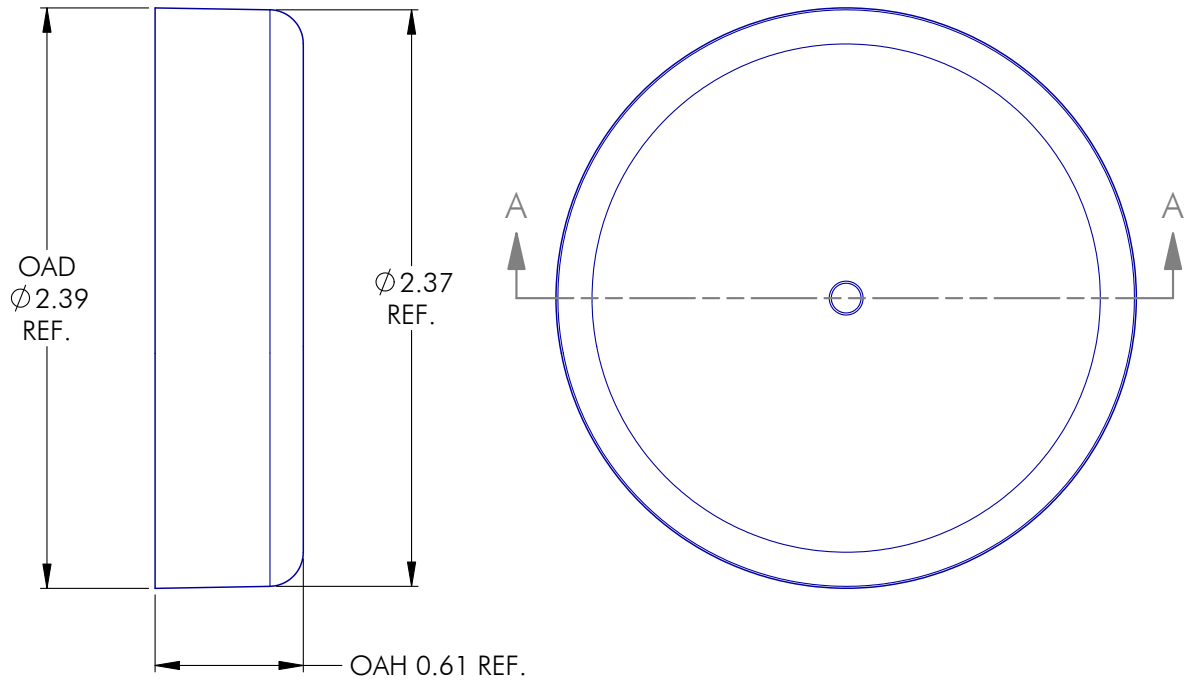
For blank CRC closures, the customer is responsible for providing opening and closing instructions with the final package upon sale


PHXPKG.COM

P 630 420 4750 **E** greatpkg@phxpkg.com
 975 Meridian Lake Drive • Aurora, IL 60504

VISTA CHILD-RESISTANT CLOSURES

53-CRC-SMBK A



NOTES: (UNLESS OTHERWISE SPECIFIED)
 1. ALL DIMENSIONS ARE IN INCHES.
 2. SEE CHART FOR DIMENSIONAL TOLERANCE.

THIS OR FACSIMILE THEREOF IS THE EXCLUSIVE PROPERTY OF PHOENIX AND MAY NOT BE REPRODUCED WITHOUT THE EXPRESSED WRITTEN CONSENT OF PHOENIX. SOME OR ALL OF THE ITEMS DEPICTED ON THIS DRAWING MAY BE COVERED BY CURRENT PATENTS OR PATENTS APPLIED FOR BY PHOENIX.

1	04.09.19	Reduce Outer Diameter	LD
REV	DATE	DESCRIPTION	BY
TOLERANCE	PITCH/TPI .167 / 6	TURNS 356°	MAT'L PP
.X ±0.1	DRAWN DMN	DATE 06.29.16	SCALE 3 : 2
.XX ±0.02	53 - CRC - SMBK (S)		REV
.XXX ±0.010			1

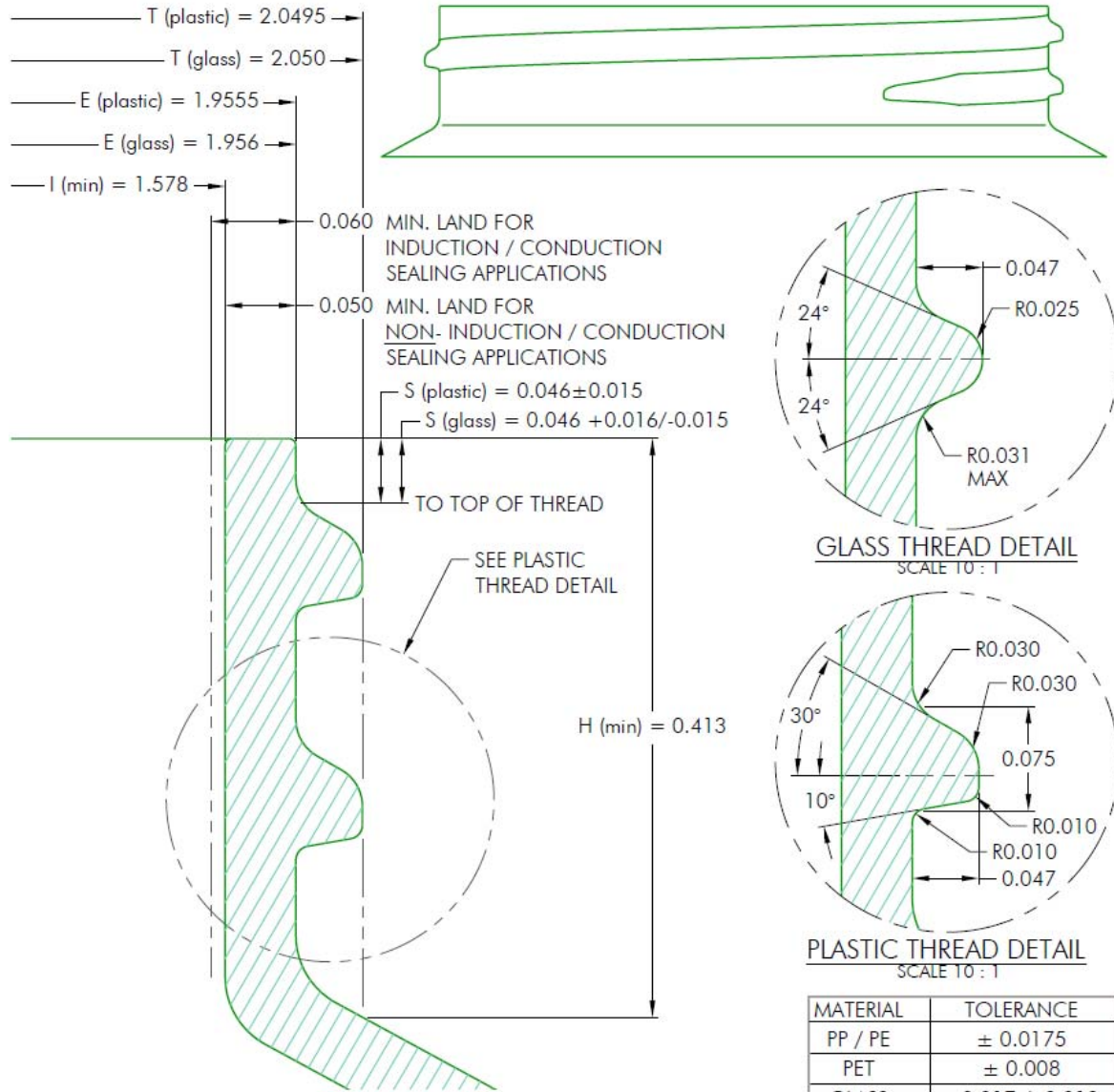

PHOENIX™

PHXPKG.COM

 P 630 420 4750 E greatpkg@phxpkg.com
 975 Meridian Lake Drive • Aurora, IL 60504

VISTA CHILD-RESISTANT CLOSURES

53-CRC-SMBK A



NOTES: (UNLESS OTHERWISE SPECIFIED)
 1. ALL DIMENSIONS ARE IN INCHES.
 2. SEE CHART FOR DIMENSIONAL TOLERANCE.

0	10.01.02	Released	BZ
REV	DATE	DESCRIPTION	BY
TOLERANCE	PITCH/TPI	1.67 / 6	TURNS 1-1/8
.X ±0.1	DRAWN	BEZ	DATE 10.01.02
.XX ±0.02	SCALE	10 : 1	REV
.XXX ±0.010	53 - 400 - FINISH		0