

**VISTA CHILD-RESISTANT CLOSURES**

# 45-CRC-STPT A



## Specifications:

- DIAMETER** 45 mm
- THREAD PROFILE** CRC
- NECK FINISH** 45-CRC
- CLOSURE TOP** Debossed Pictogram
- CLOSURE SIDEWALL** Wide Ribbed
- MATERIAL** PP, PCR PP

**PACKAGING & FREIGHT INFORMATION**

PACK TYPE	PCS/CTN	CTNS/PALT	PCS/PALT	CTN WT*	PALT WT*	FRT CLASS
Bulk	1,700	15	25,500	36 <sup>(1)</sup>	537 <sup>(1)</sup>	100 <sup>(1)</sup>
Bulk	1,700	15	25,500	36 <sup>(2)</sup>	537 <sup>(2)</sup>	100 <sup>(2)</sup>
<b>CARTON DIMENSIONS: 24 x 16 x 15</b>			<b>PALLET DIMENSIONS: 48 x 40 x 50</b>			

(1) Unlined Closures (2) Lined Closures \*Approximate

**MARKETS**

Vitamins, Nutraceuticals, Pharmaceuticals, Supplements, Agricultural Products, Automotive Products, Household Chemicals, Cosmetics, Industrial Products, Cannabis, and Nutritional Powders

**OPTIONS**

Available in white, standard, and custom colors. Can be lined with a wide variety of liner systems including SureSeal (foam), pressure sensitive. Optional 25-30% food-contact safe PCR PP material available.

**CLOSURE BENEFITS**

- Offers child-resistance feature
- Vista® 2-piece CRC
- Push-and-turn
- Popular for vitamins & nutraceuticals
- Debossed with pictogram instructions

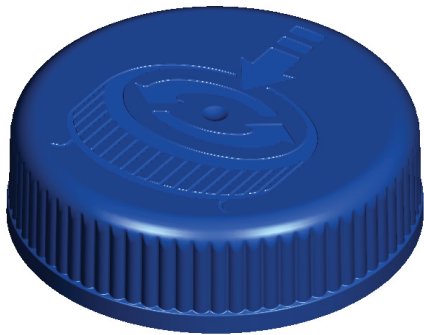
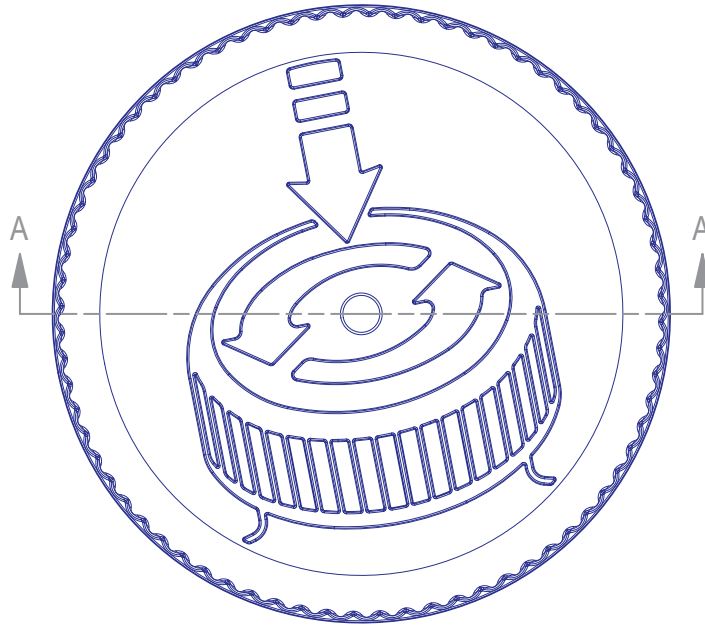
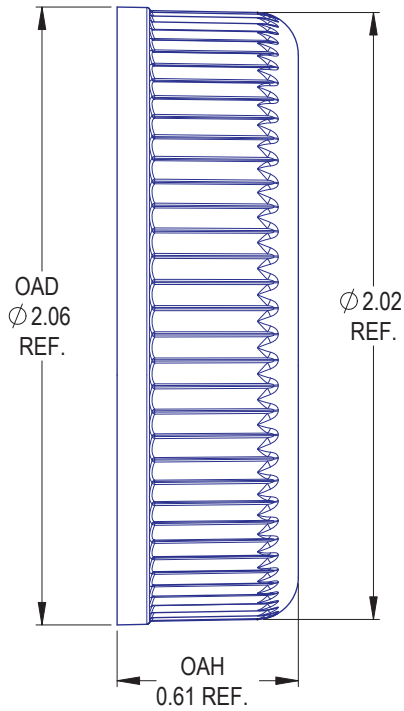


PHXPKG.COM

P 630 420 4750 E greatpkg@phxpkg.com  
975 Meridian Lake Drive • Aurora, IL 60504

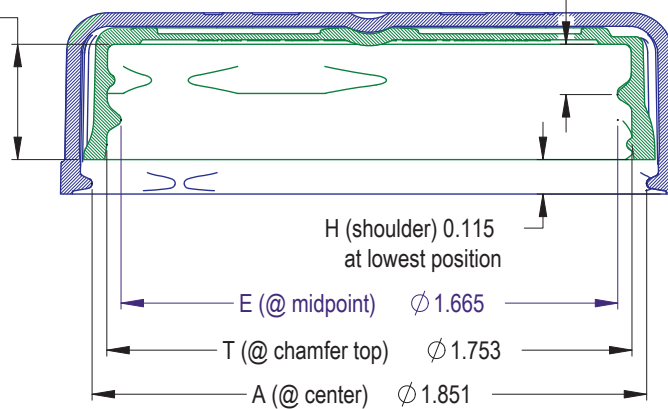
**VISTA CHILD-RESISTANT CLOSURES**

# 45-CRC-STPT A



H (int to seal surface)  
0.385

S-1 (@ center) 0.17 REF.



NOTES: (UNLESS OTHERWISE SPECIFIED)  
1. ALL DIMENSIONS ARE IN INCHES.  
2. SEE CHART FOR DIMENSIONAL TOLERANCE.

THIS OR FACSIMILE THEREOF IS THE EXCLUSIVE PROPERTY OF PHOENIX AND MAY NOT BE REPRODUCED WITHOUT THE EXPRESSED WRITTEN CONSENT OF PHOENIX. SOME OR ALL OF THE ITEMS DEPICTED ON THIS DRAWING MAY BE COVERED BY CURRENT PATENTS OR PATENTS APPLIED FOR BY PHOENIX.

5	07.03.18	Update 'E' Dim. to Reflect Production	DN
REV	DATE	DESCRIPTION	BY
TOLERANCE	PITCH/TPI	.167 / 6	TURNS 345°
.X	±0.1	DRAWN DMN	DATE 08.28.16
.XX	±0.02	SCALE	2 : 1
.XXX	±0.010	<b>45 - CRC - STPT S</b>	
			<b>5</b>

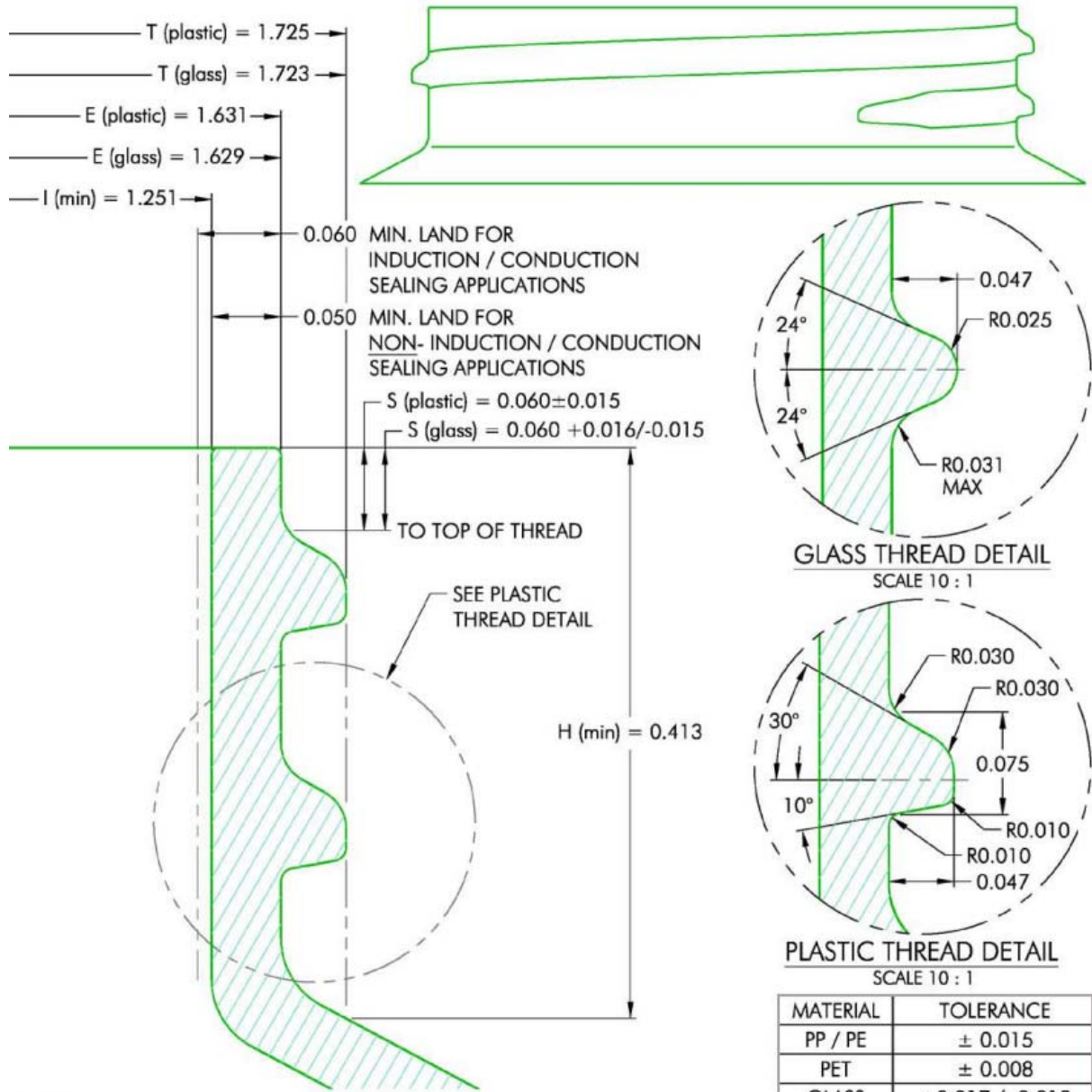

**PHOENIX™**

PHXPKG.COM

 P 630 420 4750 E greatpkg@phxpkg.com  
 975 Meridian Lake Drive • Aurora, IL 60504

VISTA CHILD-RESISTANT CLOSURES

# 45-CRC-STPT A



NOTES: (UNLESS OTHERWISE SPECIFIED) 1. ALL DIMENSIONS ARE IN INCHES. 2. SEE CHART FOR DIMENSIONAL TOLERANCE.  THIS OR FACSIMILE THEREOF IS THE EXCLUSIVE PROPERTY OF PHOENIX AND MAY NOT BE REPRODUCED WITHOUT THE EXPRESSED WRITTEN CONSENT OF PHOENIX. SOME OR ALL OF THE ITEMS DEPICTED ON THIS DRAWING MAY BE COVERED BY CURRENT PATENTS OR PATENTS APPLIED FOR BY PHOENIX.	0	09.17.96	Released	BZ	
	REV	DATE	DESCRIPTION	BY	
	TOLERANCE	PITCH/TPI	.167 / 6	TURNS 1-1/8	MAT'L Per Chart
	.X	$\pm 0.1$	DRAWN BEZ	DATE 09.17.96	SCALE 10 : 1
	.XX	$\pm 0.02$		REV	
	.XXX	$\pm 0.010$			
	45 - 400 - FINISH			0	