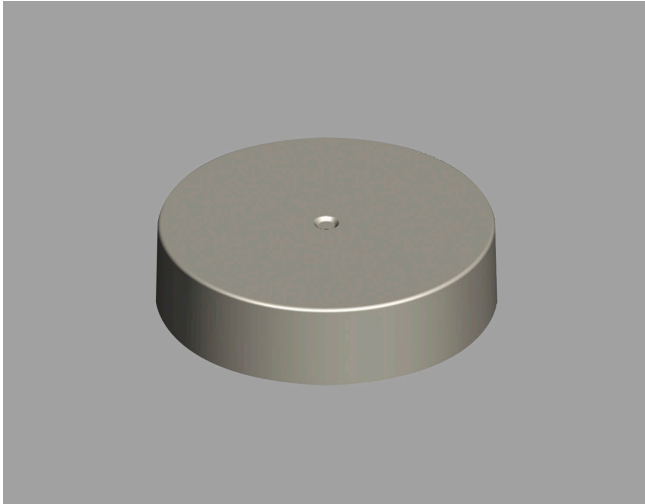


SMOOTH TOPS & SIDES

# 43-400-8511 S



## Specifications:

**DIAMETER** 43 mm  
**THREAD PROFILE** 400  
**NECK FINISH** 43-400  
**CLOSURE TOP** Smooth  
**CLOSURE SIDEWALL** Smooth  
**MATERIAL** PP, PCR PP

### PACKAGING & FREIGHT INFORMATION

PACK TYPE	PCS/CTN	CTNS/PALT	PCS/PALT	CTN WT*	PALT WT*	FRT CLASS
Bulk	3,000	15	45,000	26 <sup>(1)</sup>	390 <sup>(1)</sup>	125 <sup>(1)</sup>
Bulk	3,000	15	45,000	29 <sup>(2)</sup>	437 <sup>(2)</sup>	125 <sup>(2)</sup>
<b>CARTON DIMENSIONS: 24 x 16 x 15</b>			<b>PALLET DIMENSIONS: 48 x 40 x 50</b>			

(1) Unlined Closures (2) Lined Closures \*Approximate

### MARKETS

Nutraceuticals, Personal Care & Cosmetics, Pharmaceuticals, and Food

### OPTIONS

Available in white, standard, and custom colors. Can be lined with a variety of liner systems including SureSeal (foam), pressure sensitive and heat induction (foil) liners. Offset printing is available on this closure in up to four colors. Optional 25-30% food-contact safe PCR PP material available.

### CLOSURE BENEFITS

- Smooth top and sides lend a “clean” look to the package
- Popular for vitamins and nutraceuticals
- Popular for cosmetics

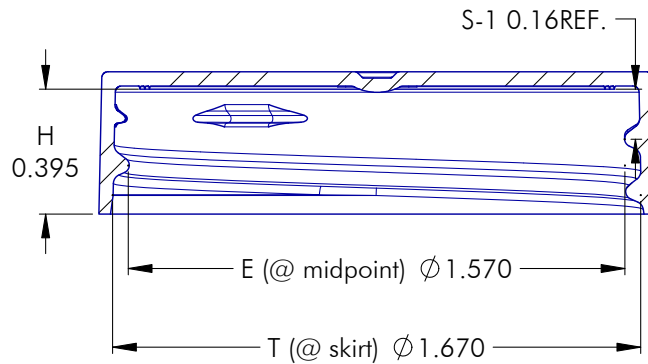
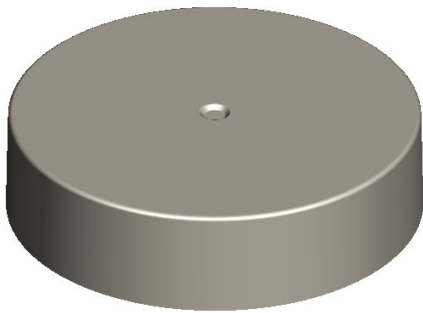
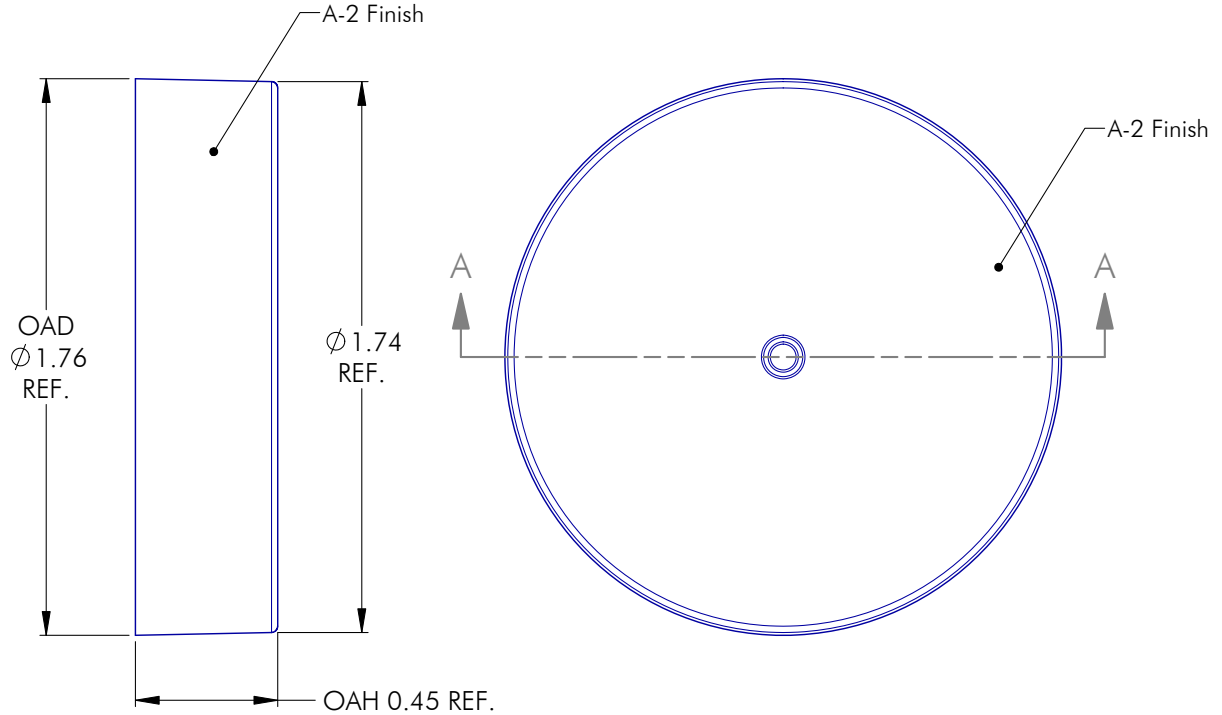


PHXPKG.COM

P 630 420 4750 E greatpkg@phxpkg.com  
 975 Meridian Lake Drive • Aurora, IL 60504

SMOOTH TOPS & SIDES

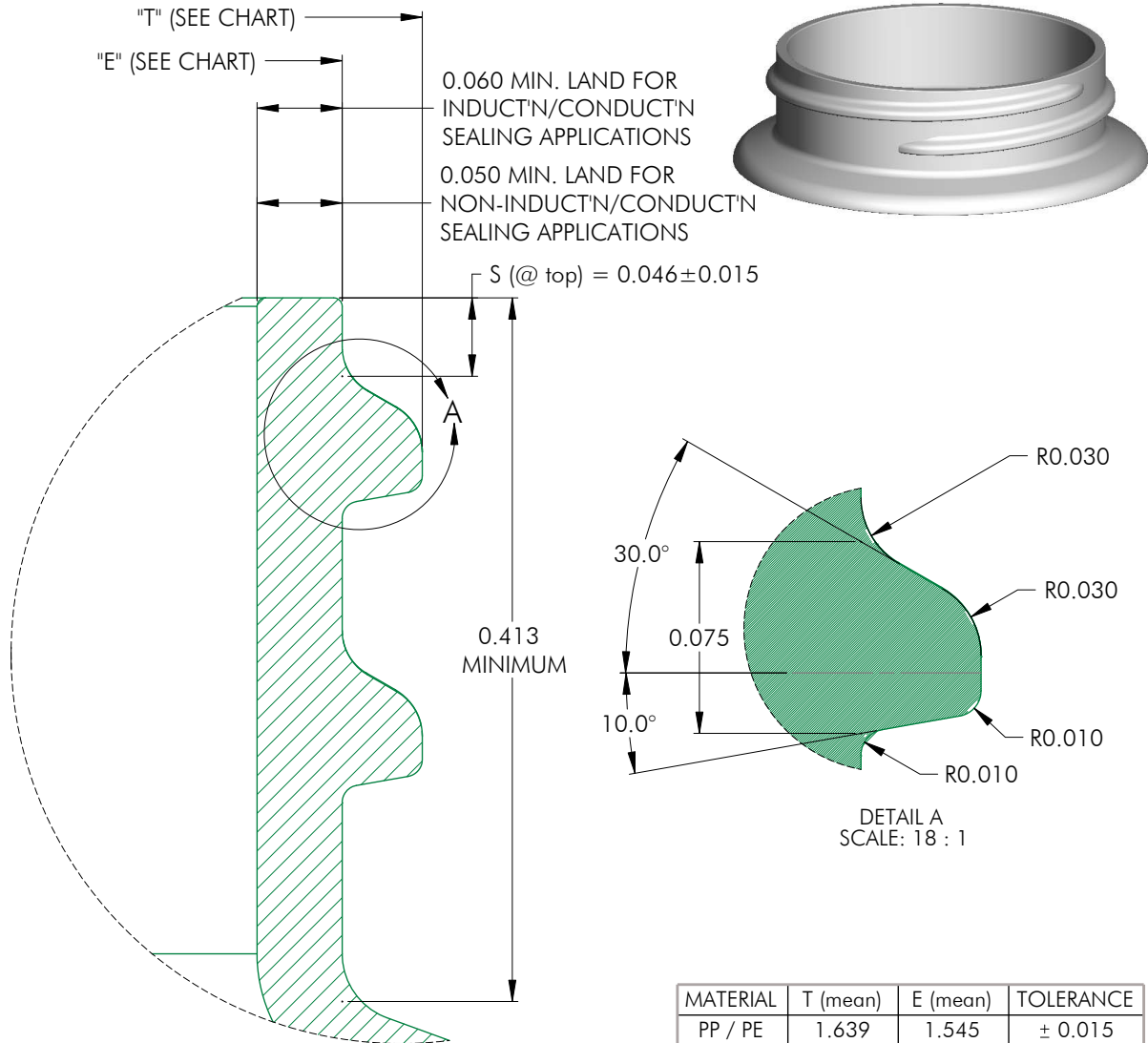
# 43-400-8511 S



<p>NOTES: (UNLESS OTHERWISE SPECIFIED)          1. ALL DIMENSIONS ARE IN INCHES.          2. SEE CHART FOR DIMENSIONAL TOLERANCE.</p> <p>THIS OR FACSIMILE THEREOF IS THE EXCLUSIVE PROPERTY OF PHOENIX AND MAY NOT BE REPRODUCED WITHOUT THE EXPRESSED WRITTEN CONSENT OF PHOENIX. SOME OR ALL OF THE ITEMS DEPICTED ON THIS DRAWING MAY BE COVERED BY CURRENT PATENTS OR PATENTS APPLIED FOR BY PHOENIX.</p>	1	07.22.21	Updated draft angle			LD		
	REV	DATE	DESCRIPTION			BY		
	TOLERANCE	PITCH/TPI .167 / 6		URNS	1-1/8	MAT'L	PP	
	.X	±0.1	DRAWN	LMD	DATE	04.19.21	SCALE	2 : 1
	.XX	±0.02	043 - 400 - 8511 S			REV	1	
.XXX	±0.010							

SMOOTH TOPS & SIDES

# 43-400-8511 S



MATERIAL	T (mean)	E (mean)	TOLERANCE
PP / PE	1.639	1.545	± 0.015
PET	1.639	1.545	± 0.015
GLASS	N/A	N/A	± N/A

NOTES: (UNLESS OTHERWISE SPECIFIED)		0	08.14.06	Released	BZ
1. ALL DIMENSIONS ARE IN INCHES.		REV	DATE	DESCRIPTION	BY
2. SEE CHART FOR DIMENSIONAL TOLERANCE.		TOLERANCE	PITCH/TPI	TURNS	MAT'L PER CHART
THIS OR FACSIMILE THEREOF IS THE EXCLUSIVE PROPERTY OF PHOENIX AND MAY NOT BE REPRODUCED WITHOUT THE EXPRESSED WRITTEN CONSENT OF PHOENIX. SOME OR ALL OF THE ITEMS DEPICTED ON THIS DRAWING MAY BE COVERED BY CURRENT PATENTS OR PATENTS APPLIED FOR BY PHOENIX.		.X ±0.1	.167 / 6	1-1/8	
		.XX ±0.02	DRAWN	DATE	SCALE
		.XXX ±0.010	BEZ	08.14.06	12 : 1
<b>43 - 400 - FINISH</b>					0