

SMOOTH TOP & RIBBED SIDES

43-400-73 S



Specifications:

DIAMETER 43 mm
THREAD PROFILE 400
NECK FINISH 43-400
CLOSURE TOP Smooth
CLOSURE SIDEWALL Fine Ribbed
MATERIAL PP, PCR PP

PACKAGING & FREIGHT INFORMATION

PACK TYPE	PCS/CTN	CTNS/PALT	PCS/PALT	CTN WT*	PALT WT*	FRT CLASS
Bulk	3,300	15	49,500	21 ⁽¹⁾	314 ⁽¹⁾	125 ⁽¹⁾
Bulk	3,300	15	49,500	30 ⁽²⁾	453 ⁽²⁾	100 ⁽²⁾
CARTON DIMENSIONS: 24 x 16 x 15			PALLET DIMENSIONS: 48 x 40 x 50			

(1) Unlined Closures (2) Lined Closures *Approximate

MARKETS

Food, Personal Care & Cosmetics, Pharmaceuticals, Nutraceuticals, Dairy Products, and Medical Products

OPTIONS

Available in white, standard, and custom colors. Can be lined with a wide variety of liner systems including SureSeal (foam), pressure sensitive and heat induction (foil) liners. Offset printing is available in up to four colors. Multiple PCR materials available with food-contact and non-food options up to 100% PCR content.

CLOSURE BENEFITS

- A great general-purpose closure
- Fine-ribbed sides are easier to grip
- Popular for vitamins and nutraceuticals
- Stocked in white (colors available)

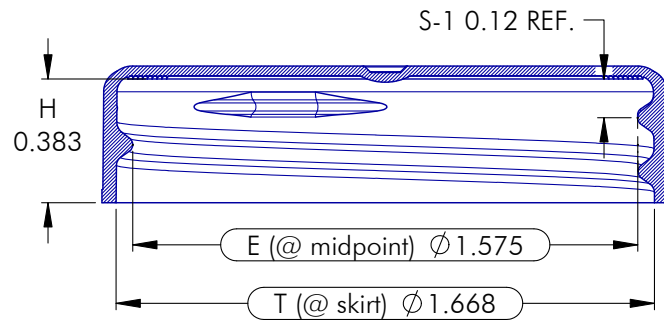
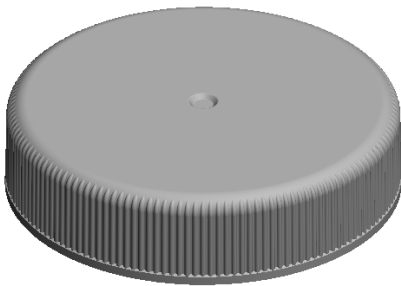
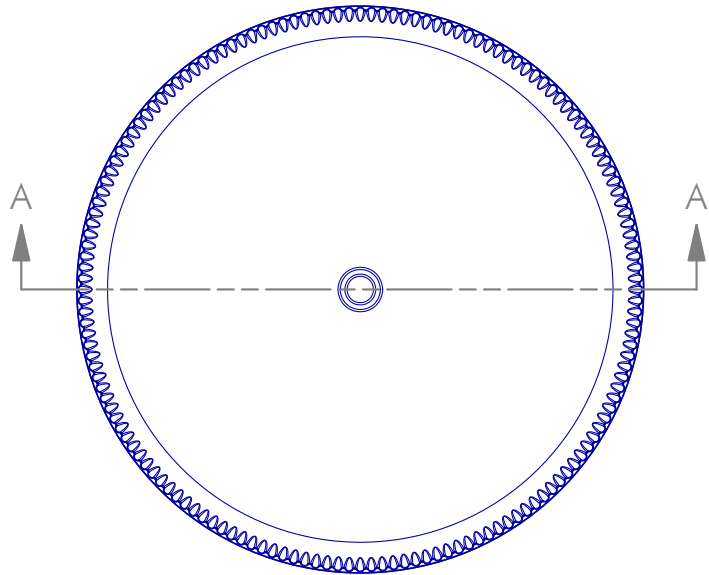
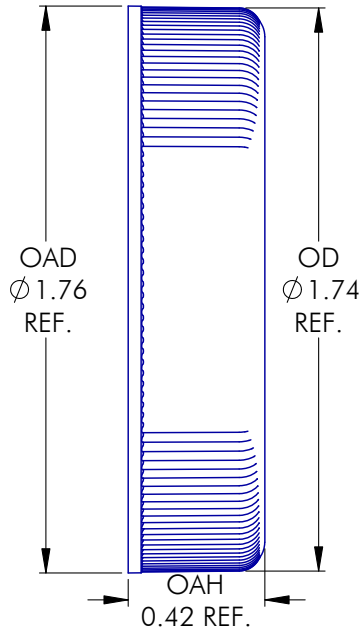


PHXPKG.COM

P 630 420 4750 E greatpkg@phxpkg.com
 975 Meridian Lake Drive • Aurora, IL 60504

SMOOTH TOP & RIBBED SIDES

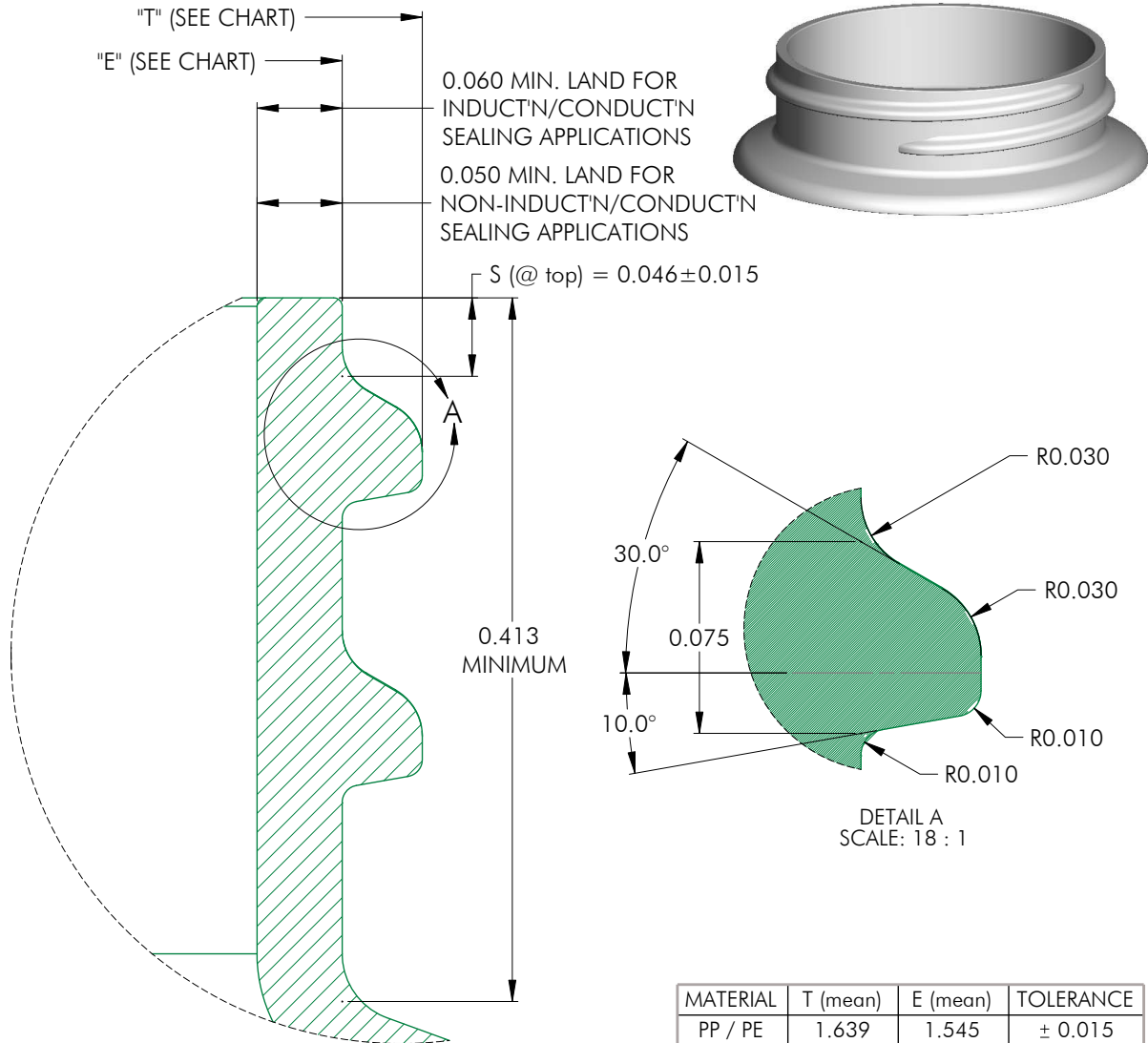
43-400-73 S



NOTES: (UNLESS OTHERWISE SPECIFIED) 1. ALL DIMENSIONS ARE IN INCHES. 2. SEE CHART FOR DIMENSIONAL TOLERANCE.				5	08.15.18	Seal Bds Revert to .383, "S" From Seal	TS			
				REV	DATE	DESCRIPTION	BY			
THIS OR FACSIMILE THEREOF IS THE EXCLUSIVE PROPERTY OF PHOENIX AND MAY NOT BE REPRODUCED WITHOUT THE EXPRESSED WRITTEN CONSENT OF PHOENIX. SOME OR ALL OF THE ITEMS DEPICTED ON THIS DRAWING MAY BE COVERED BY CURRENT PATENTS OR PATENTS APPLIED FOR BY PHOENIX.				TOLERANCE		PITCH/TPI .167 / 6	TURNES 430°	MAT'L PP		
				.X	±0.1	DRAWN TCS	DATE 03.31.16	SCALE 2 : 1	REV	
				.XX	±0.02	043 - 400 - 73 S				5
				.XXX	±0.010					

SMOOTH TOP & RIBBED SIDES

43-400-73 S



MATERIAL	T (mean)	E (mean)	TOLERANCE
PP / PE	1.639	1.545	± 0.015
PET	1.639	1.545	± 0.015
GLASS	N/A	N/A	± N/A

NOTES: (UNLESS OTHERWISE SPECIFIED)		0	08.14.06	Released	BZ
1. ALL DIMENSIONS ARE IN INCHES.		REV	DATE	DESCRIPTION	BY
2. SEE CHART FOR DIMENSIONAL TOLERANCE.		TOLERANCE	PITCH/TPI	.167 / 6	TURNS
THIS OR FACSIMILE THEREOF IS THE EXCLUSIVE PROPERTY OF PHOENIX AND MAY NOT BE REPRODUCED WITHOUT THE EXPRESSED WRITTEN CONSENT OF PHOENIX. SOME OR ALL OF THE ITEMS DEPICTED ON THIS DRAWING MAY BE COVERED BY CURRENT PATENTS OR PATENTS APPLIED FOR BY PHOENIX.		.X	±0.1	DRAWN	BEZ
		.XX	±0.02	DATE	08.14.06
		.XXX	±0.010	SCALE	12 : 1
		43 - 400 - FINISH			REV