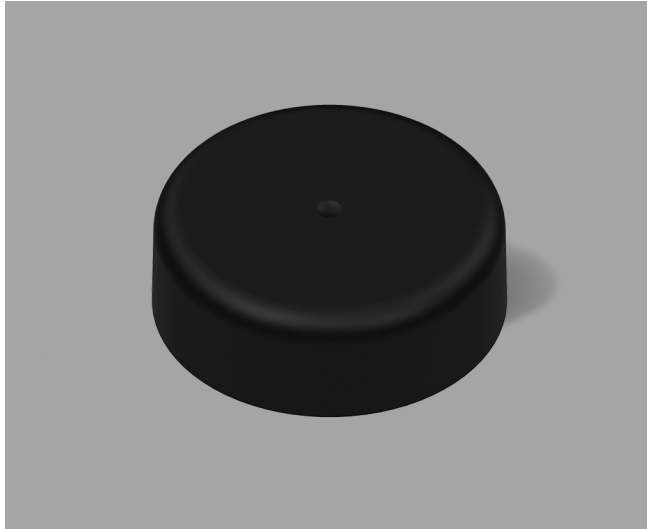


VISTA CHILD-RESISTANT CLOSURES

38-CRC-SMBK A



Specifications:

DIAMETER 38 mm

NECK FINISH 38-400

CLOSURE TOP Blank, Smatte™

CLOSURE SIDEWALL Smatte™

MATERIAL PP, PCR PP

PACKAGING & FREIGHT INFORMATION

PACK TYPE	PCS/CTN	CTNS/PALT	PCS/PALT	CTN WT*	PALT WT*	FRT CLASS
Bulk	2,000	15	30,000	33 ⁽¹⁾	495 ⁽¹⁾	100 ⁽¹⁾
Bulk	2,000	15	30,000	36 ⁽²⁾	537 ⁽²⁾	100 ⁽²⁾
CARTON DIMENSIONS: 24 x 16 x 15		PALLET DIMENSIONS: 48 x 40 x 50				

(1) Unlined Closures (2) Lined Closures *Approximate

MARKETS

Vitamins, Nutraceuticals, Pharmaceuticals, Supplements, Agricultural, Automotive, Household Chemicals, Cosmetics, Industrial, Cannabis, and Nutritional Powders

OPTIONS

Available in white, standard, and custom colors. Can be lined with a wide variety of liner systems including SureSeal (foam). Multiple PCR materials available with food-contact and non-food options up to 100% PCR content.

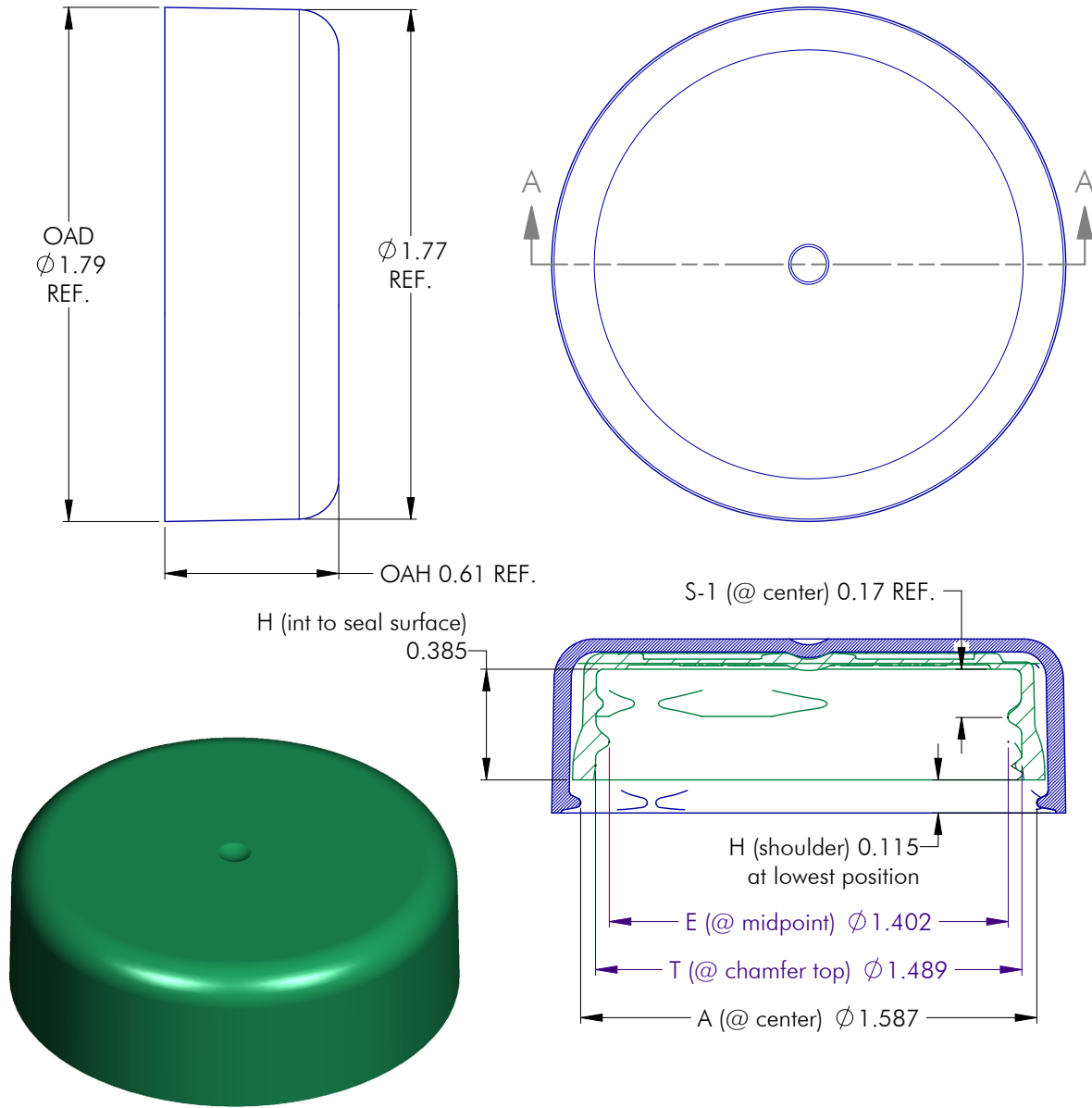
CLOSURE BENEFITS

- Offers child-resistance feature
- Popular for vitamins & nutraceuticals
- Patented Smatte™ finish for a sleek look
- Vista® 2-piece CRC
- Push-and-turn
- Blank Top

For blank CRC closures, the customer is responsible for providing opening and closing instructions with the final package upon sale

VISTA CHILD-RESISTANT CLOSURES

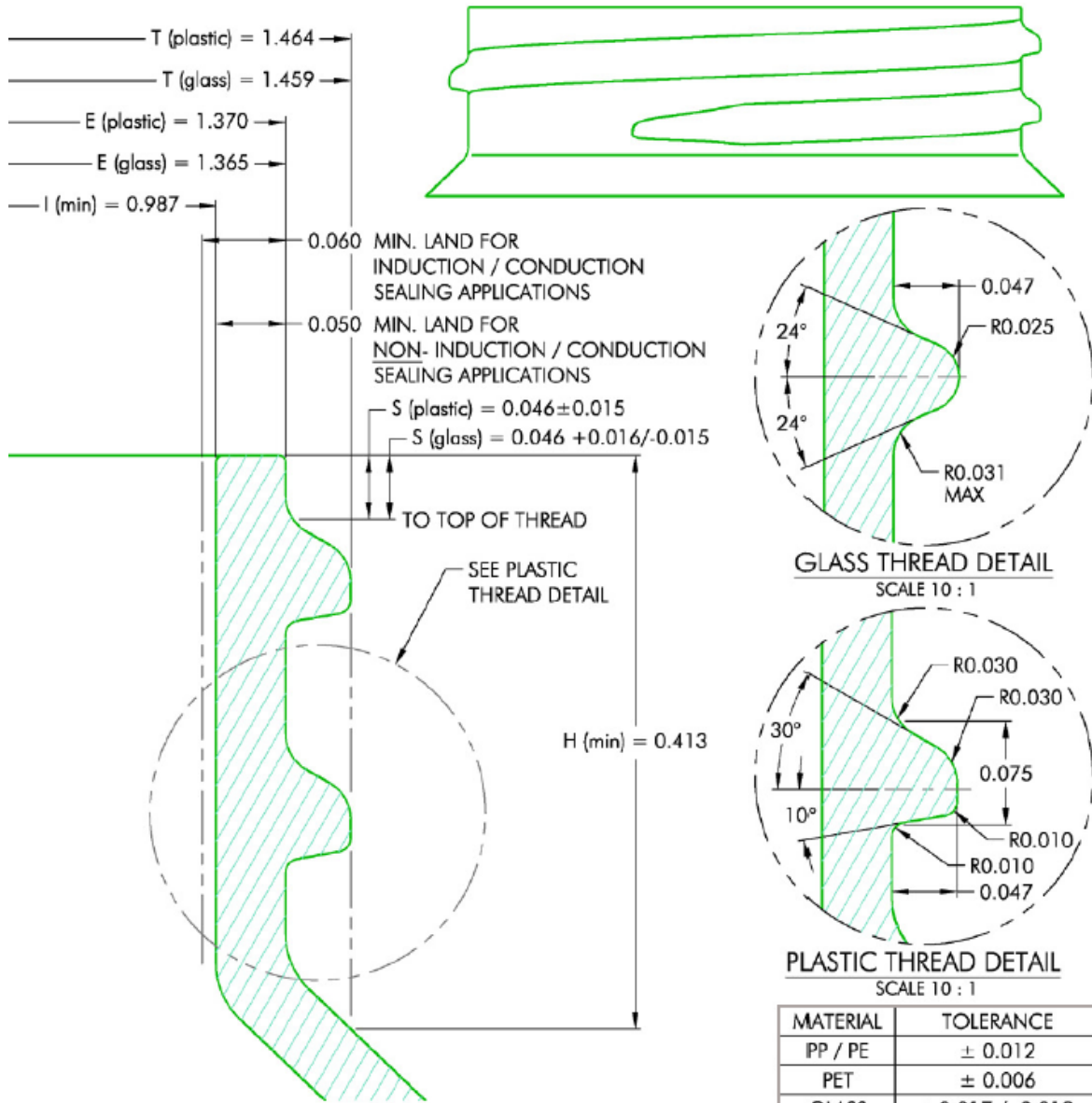
38-CRC-SMBK A



NOTES: (UNLESS OTHERWISE SPECIFIED)				4	01.17.24	UPDATED RETENTION BEAD RADIUS TO 0.02"		LD		
1. ALL DIMENSIONS ARE IN INCHES.				REV	DATE	DESCRIPTION		BY		
2. SEE CHART FOR DIMENSIONAL TOLERANCE.				TOLERANCE	PITCH/TPI	.167 / 6	TURNS	345°		
THIS OR FACSIMILE THEREOF IS THE EXCLUSIVE PROPERTY OF PHOENIX AND MAY NOT BE REPRODUCED WITHOUT THE EXPRESSED WRITTEN CONSENT OF PHOENIX. SOME OR ALL OF THE ITEMS DEPICTED ON THIS DRAWING MAY BE COVERED BY CURRENT PATENTS OR PATENTS APPLIED FOR BY PHOENIX.				.X	±0.1	DRAWN	DMN	DATE		
				.XX	±0.02	DATE	06.29.16	SCALE	2 : 1	REV
				.XXX	±0.010	038 - CRC - SMBK S			4	

VISTA CHILD-RESISTANT CLOSURES

38-CRC-SMBK A



NOTES: (UNLESS OTHERWISE SPECIFIED)
 1. ALL DIMENSIONS ARE IN INCHES.
 2. SEE CHART FOR DIMENSIONAL TOLERANCE.

BF	05.21.18	Released	DN
REV	DATE	DESCRIPTION	BY
TOLERANCE	PITCH/TPI	1.67 / 6	TURNS 1-1/4
.X	± 0.1	DRAWN	BEZ
.XX	± 0.02	DATE	08.31.93
.XXX	± 0.010	SCALE	10 : 1
38 - 400 - FINISH			REV
			0