

MEDIUM & DEEP SKIRT CLOSURES

# 38-8TP-DR S



## Specifications:

**DIAMETER** 38 mm  
**THREAD PROFILE** 8TP  
**NECK FINISH** 38-8TP  
**CLOSURE TYPE** CT  
**CLOSURE TOP** Smooth  
**CLOSURE SIDEWALL** Ribbed  
**MATERIAL** PP

### PACKAGING & FREIGHT INFORMATION

PACK TYPE	PCS/CTN	CTNS/PALT	PCS/PALT	CTN WT*	PALT WT*	FRT CLASS
Bulk	2,250	15	33,750	25.5 <sup>(1)</sup>	383 <sup>(1)</sup>	125 <sup>(1)</sup>
Bulk	2,250	15	33,750	27.4 <sup>(1)</sup>	412 <sup>(1)</sup>	125 <sup>(1)</sup>
<b>CARTON DIMENSIONS: 24 x 16 x 15</b>			<b>PALLET DIMENSIONS: 48 x 40 x 50</b>			

(1) Unlined Closures (2) Lined Closures \*Approximate

### MARKETS

Dressings & Sauces, Food, Food Service, and Food Oil.

### OPTIONS

Available in white, standard, and custom colors. Can be lined with a wide variety of liner systems.

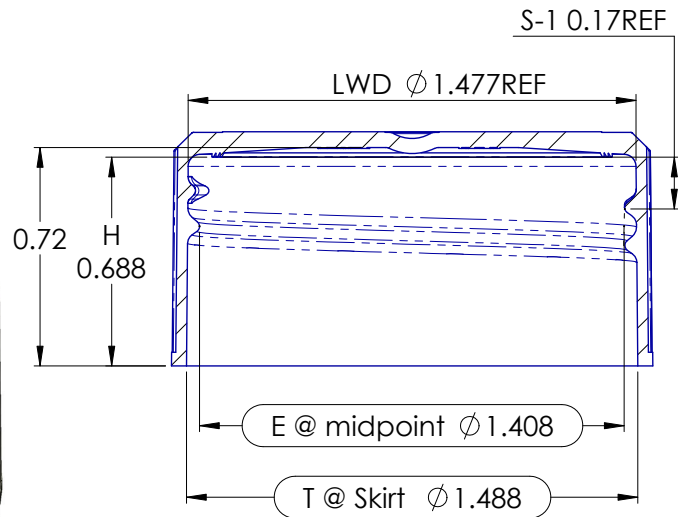
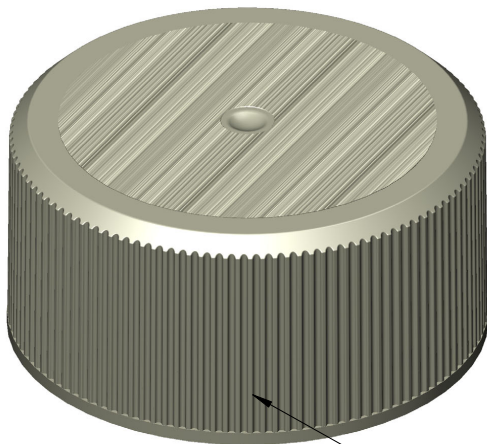
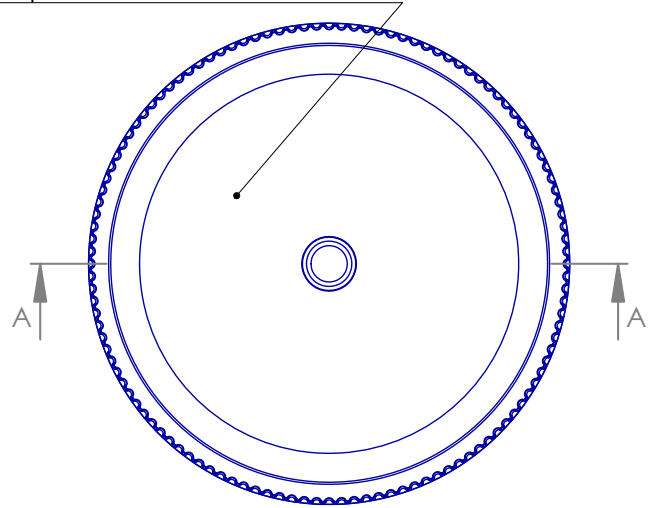
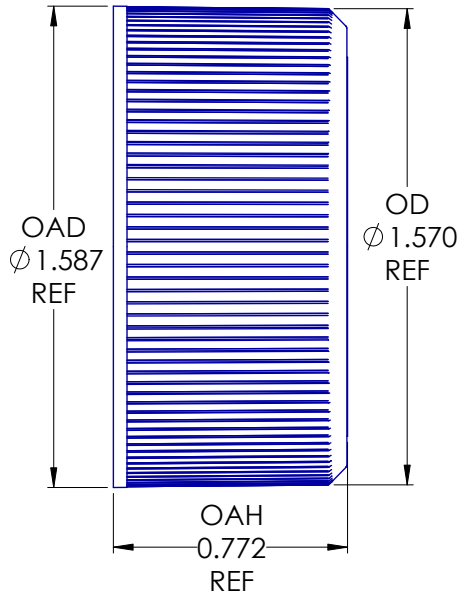
### CLOSURE BENEFITS

- Popular for salad dressings
- Popular for sauces
- Fine-ribbed sides are easier to grip

MEDIUM & DEEP SKIRT CLOSURES

# 38-8TP-DR S

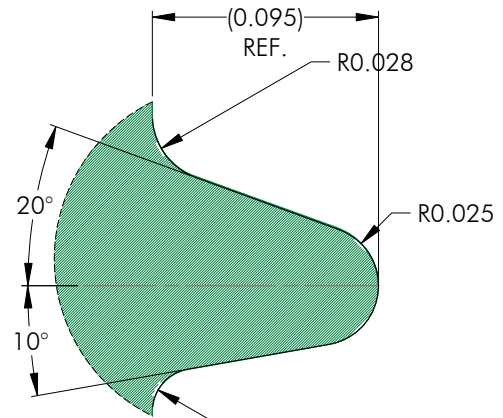
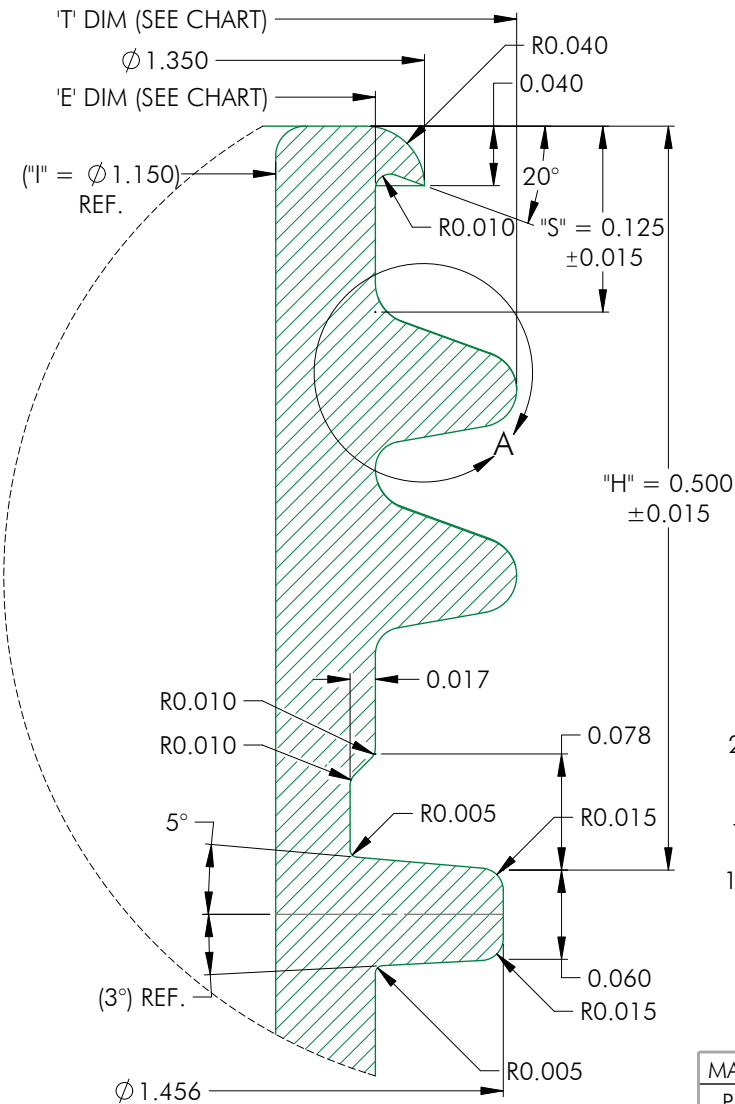
EDM stipple surface finish on top of cap within 1.25 diameter



NOTES: (UNLESS OTHERWISE SPECIFIED) 1. ALL DIMENSIONS ARE IN INCHES. 2. SEE CHART FOR DIMENSIONAL TOLERANCE.		3	08.13.24	Update "E" dim to align with actual molded results, ECN 3023	LD	
THIS OR FACSIMILE THEREOF IS THE EXCLUSIVE PROPERTY OF PHOENIX AND MAY NOT BE REPRODUCED WITHOUT THE EXPRESSED WRITTEN CONSENT OF PHOENIX. SOME OR ALL OF THE ITEMS DEPICTED ON THIS DRAWING MAY BE COVERED BY CURRENT PATENTS OR PATENTS APPLIED FOR BY PHOENIX.		REV	DATE	DESCRIPTION	BY	
		TOLERANCE	PITCH/TPI .125 / 0	TURNS 1 1/4	MAT'L PP	
		.X $\pm$ 0.1	DRAWN LMD	DATE 09.15.20	SCALE 2 : 1	REV
		.XX $\pm$ 0.02	<b>038 - 8TP - DR S</b>			3
.XXX $\pm$ 0.010						

MEDIUM & DEEP SKIRT CLOSURES

# 38-8TP-DR S



**DETAIL A**  
SCALE: 16 : 1

MATERIAL	T (mean)	E (mean)	TOLERANCE
PP / PE	1.474	1.284	± 0.010
PET	1.476	1.286	± 0.008
GLASS	0.0000	0.0000	± 0.0000

NOTES: (UNLESS OTHERWISE SPECIFIED) 1. ALL DIMENSIONS ARE IN INCHES. 2. SEE CHART FOR DIMENSIONAL TOLERANCE.		0	04.04.06	Released	BZ
REV	DATE	DESCRIPTION		BY	
TOLERANCE	PITCH/TPI	.125 / 8	TURNS	1-1/2	MAT'L PER CHART
.X ±0.1	DRAWN	BEZ	DATE	04.04.06	SCALE 10 : 1
.XX ±0.02	38 - 8TP - FINISH				REV
.XXX ±0.010					0