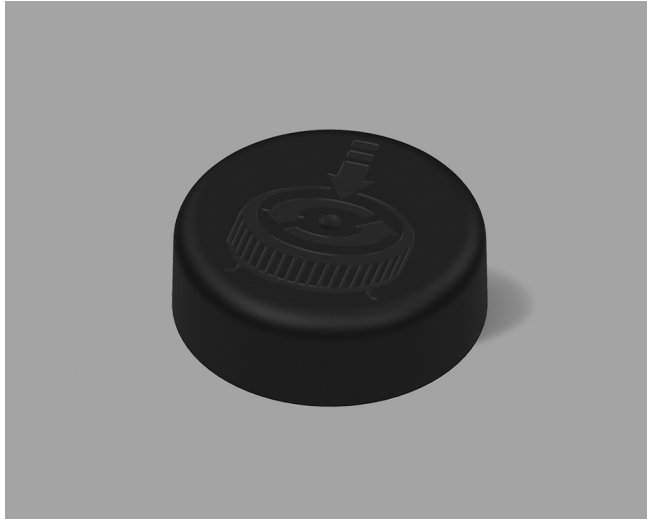


**VISTA CHILD-RESISTANT CLOSURES**

# 28-CRC-SMPT A



## Specifications:

**DIAMETER** 28 mm

**NECK FINISH** 28-400

**CLOSURE TOP** Debossed Pictogram

**CLOSURE SIDEWALL** Smatte™

**MATERIAL** PP, PCR PP

### PACKAGING & FREIGHT INFORMATION

PACK TYPE	PCS/CTN	CTNS/PALT	PCS/PALT	CTN WT*	PALT WT*	FRT CLASS
Bulk	3,000	15	45,000	34.4 <sup>(1)</sup>	516 <sup>(1)</sup>	100 <sup>(1)</sup>
Bulk	3,000	15	45,000	35.6 <sup>(2)</sup>	534 <sup>(2)</sup>	100 <sup>(2)</sup>
<b>CARTON DIMENSIONS: 24 x 16 x 15</b>			<b>PALLET DIMENSIONS: 48 x 40 x 50</b>			

(1) Unlined Closures (2) Lined Closures \*Approximate

### MARKETS

Vitamins, Nutraceuticals, Pharmaceuticals, Supplements, Agricultural, Automotive, Household Chemicals, Cosmetics, Industrial, Cannabis, and Nutritional Powders

### OPTIONS

Available in white, standard, and custom colors. Can be lined with a wide variety of liner systems including SureSeal (foam). Multiple PCR materials available with food-contact and non-food options up to 100% PCR content.

### CLOSURE BENEFITS

- Patented Smatte™ finish for a sleek look
- Offers child-resistance feature
- Vista® 2-piece CRC
- Push-and-turn
- Debossed with pictogram instructions
- Popular for vitamins & nutraceuticals

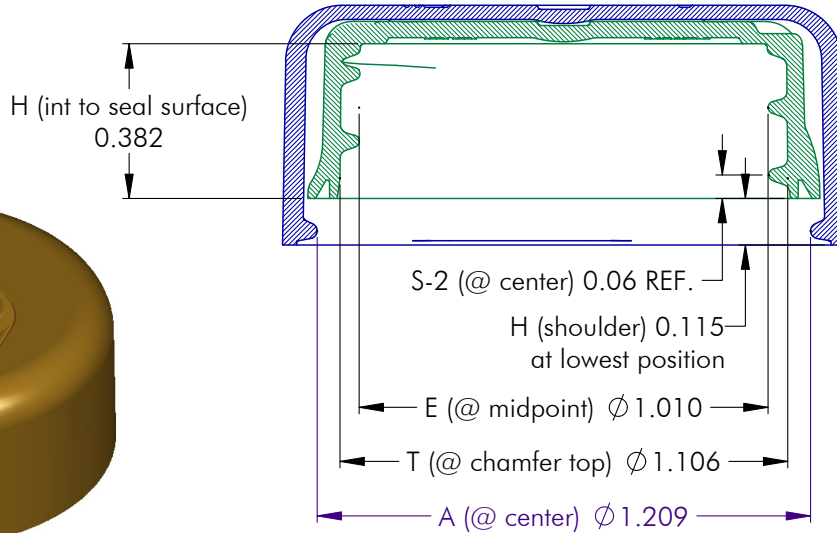
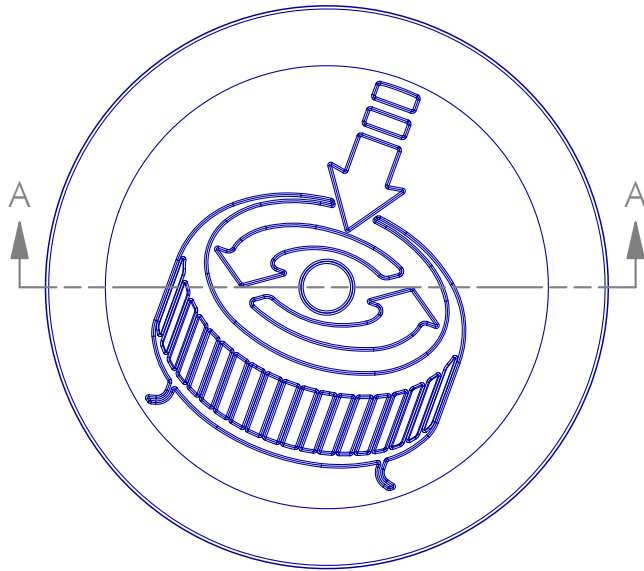
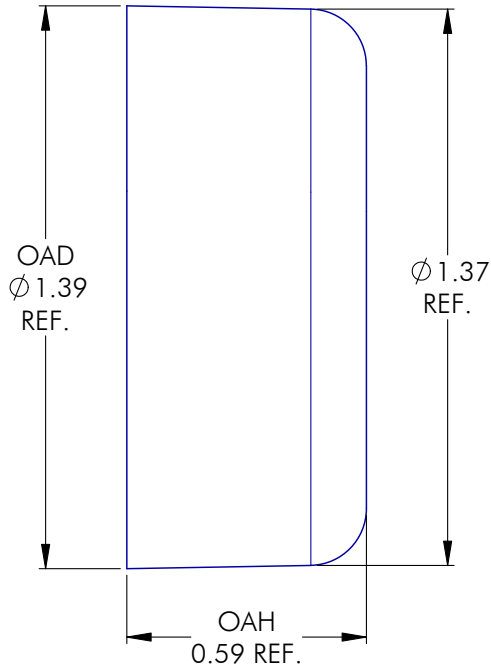


PHXPKG.COM

P 630 420 4750 E greatpkg@phxpkg.com  
975 Meridian Lake Drive • Aurora, IL 60504

**VISTA CHILD-RESISTANT CLOSURES**

# 28-CRC-SMPT A


**NOTES: (UNLESS OTHERWISE SPECIFIED)**

1. ALL DIMENSIONS ARE IN INCHES.
2. SEE CHART FOR DIMENSIONAL TOLERANCE.

THIS OR FACSIMILE THEREOF IS THE EXCLUSIVE PROPERTY OF PHOENIX AND MAY NOT BE REPRODUCED WITHOUT THE EXPRESSED WRITTEN CONSENT OF PHOENIX. SOME OR ALL OF THE ITEMS DEPICTED ON THIS DRAWING MAY BE COVERED BY CURRENT PATENTS OR PATENTS APPLIED FOR BY PHOENIX.

4	03.19.21	Update "E" Dim. to Reflect Production		DN
REV	DATE	DESCRIPTION		BY
TOLERANCE	PITCH/TPI	.167 / 6	TURNS ~1-1/4	MAT'L PP
.X $\pm$ 0.1	DRAWN	DMN	DATE 07.24.20	SCALE 5 : 2
.XX $\pm$ 0.02	28 - CRC - SMPT S			REV
.XXX $\pm$ 0.010				4

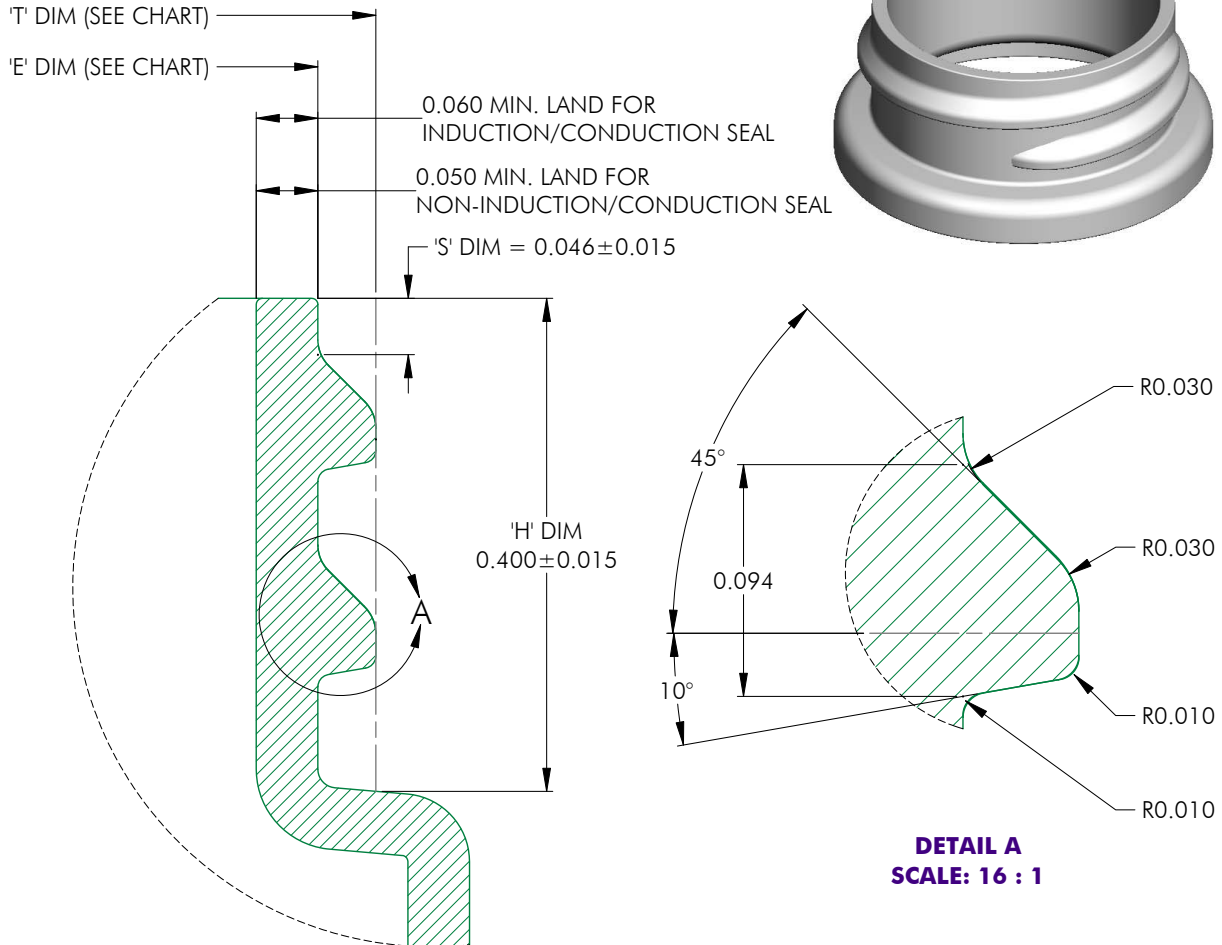

**PHOENIX™**

PHXPKG.COM

 P 630 420 4750 E greatpkg@phxpkg.com  
 975 Meridian Lake Drive • Aurora, IL 60504

**VISTA CHILD-RESISTANT CLOSURES**

# 28-CRC-SMPT A



**DETAIL A**  
**SCALE: 16 : 1**

MATERIAL	T (mean)	E (mean)	TOLERANCE
PP / PE	1.078	0.984	± 0.010
PET	1.080	0.986	± 0.008
GLASS	N/A	N/A	± N/A

NOTES: (UNLESS OTHERWISE SPECIFIED) 1. ALL DIMENSIONS ARE IN INCHES. 2. SEE CHART FOR DIMENSIONAL TOLERANCE.  THIS OR FACSIMILE THEREOF IS THE EXCLUSIVE PROPERTY OF PHOENIX AND MAY NOT BE REPRODUCED WITHOUT THE EXPRESSED WRITTEN CONSENT OF PHOENIX. SOME OR ALL OF THE ITEMS DEPICTED ON THIS DRAWING MAY BE COVERED BY CURRENT PATENTS OR PATENTS APPLIED FOR BY PHOENIX.	0	11.15.04	Released	BZ			
	REV	DATE	DESCRIPTION	BY			
	TOLERANCE	PITCH/TPI	.167 / 6	TURNS	1-1/8	MAT'L	PER CHART
	.X ±0.1	DRAWN	BEZ	DATE	11.15.04	SCALE	8 : 1
.XX ±0.02	<b>28 - 400 - FINISH</b>						0
.XXX ±0.010							