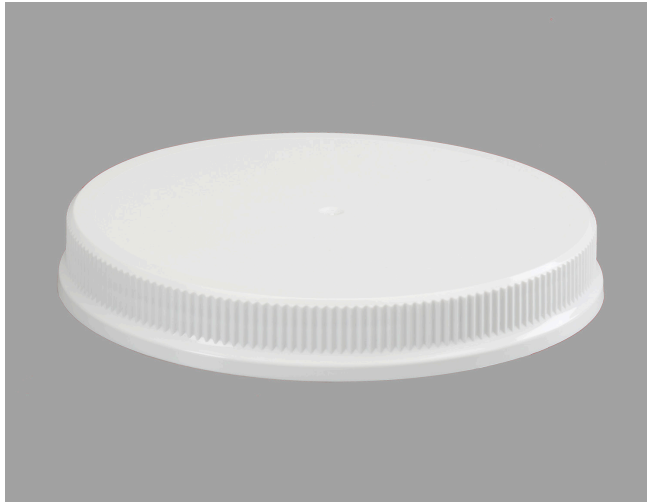


SHALLOW SKIRTED CLOSURES

110-400-9640 S



Specifications:

DIAMETER 110 mm

THREAD PROFILE 400

NECK FINISH 110-400

CLOSURE TOP Stipple

CLOSURE SIDEWALL Fine Ribbed

MATERIAL PP, PCR PP

PACKAGING & FREIGHT INFORMATION

PACK TYPE	PCS/CTN	CTNS/PALT	PCS/PALT	CTN WT*	PALT WT*	FRT CLASS
Stack	405**	15	6,075	18.8 ⁽¹⁾	282 ⁽¹⁾	175 ⁽¹⁾
Stack	405**	15	6,075	21.7 ⁽²⁾	325 ⁽²⁾	175 ⁽²⁾
Stack	435***	15	6,525	20.0 ⁽¹⁾	301 ⁽¹⁾	125 ⁽¹⁾
Stack	435***	15	6,525	22.9 ⁽²⁾	344 ⁽²⁾	125 ⁽²⁾
CARTON DIMENSIONS: 24 x 16 x 15			PALLET DIMENSIONS: 48 x 40 x 50			

(1) Unlined Closures (2) Lined Closures *Approximate **FOB Newport, TN ***FOB Greencastle, IN or Bloomington, IN

MARKETS

Agricultural, Automotive, Industrial, and Medical Products, Food, Food Service, Personal Care & Cosmetics, Pharmaceuticals, Peanut Butter & Nuts, Powdered Drinks, Dressings & Sauces

CLOSURE BENEFITS

- EcoStack nested stacking for improved quality and increased pack count
- A great general-purpose closure
- Fine-ribbed sides are easier to grip

OPTIONS

Available in white, standard, and custom colors.

Liners can be cut with tri-tab easy-open feature.

Can be embossed/debossed with custom message.

Offset printing is available in up to three colors.

Optional 25–30% food-contact PCR PP material available.



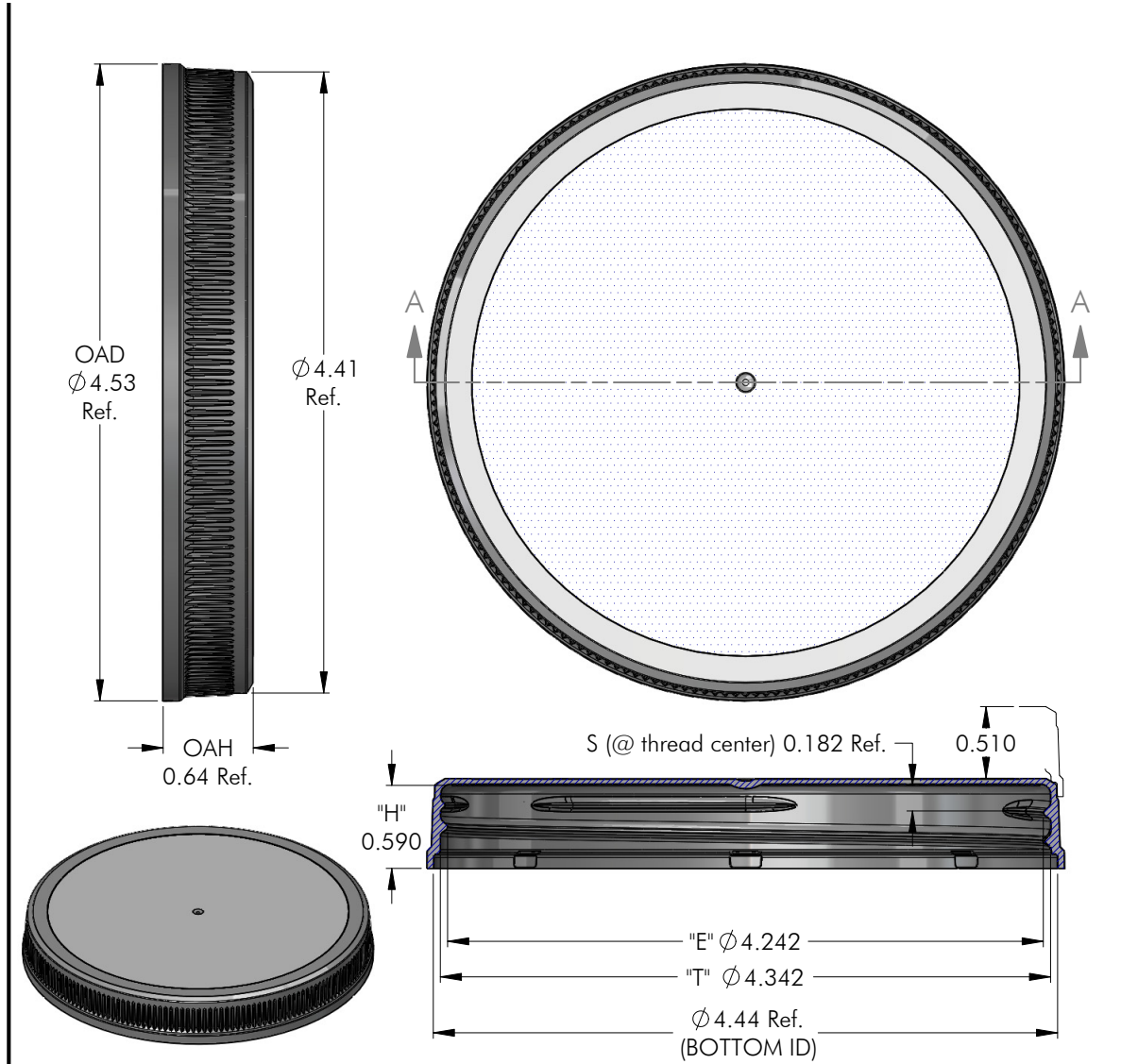
PHOENIX™

PHXPKG.COM

P 630 420 4750 E greatpkg@phxpkg.com
975 Meridian Lake Drive • Aurora, IL 60504

SHALLOW SKIRTED CLOSURES

110-400-9640 S



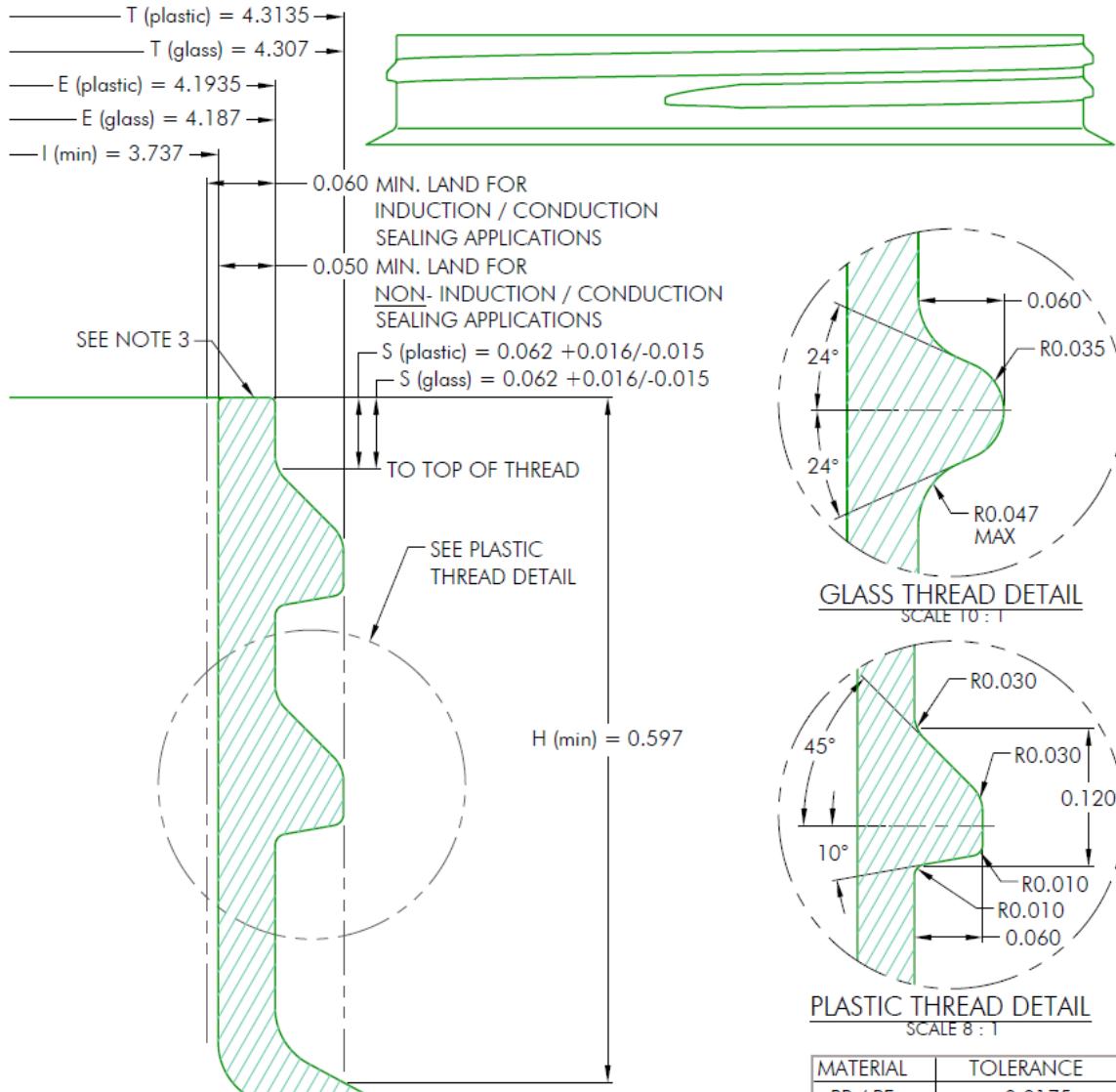
NOTES: (UNLESS OTHERWISE SPECIFIED)
 1. ALL DIMENSIONS ARE IN INCHES.
 2. TOLERANCE ON ALL DIMENSIONS IS ± 0.010 ".

15.140

8	09.16.19	LRB upper radius from .030 to .060	TCS	PITCH (TPI): 5	# OF TURNS: 1	MATERIAL: SEE NOTE 3
REV	DATE	DESCRIPTION	BY	DRAWING #: 110 - 400 - 9640 - S		SCALE: 1 : 1
THIS OR FACSIMILE THEREOF IS THE EXCLUSIVE PROPERTY OF PHOENIX CLOSURES, INC. AND MAY NOT BE REPRODUCED WITHOUT THE EXPRESSED WRITTEN CONSENT OF PHOENIX CLOSURES, INC. SOME OR ALL OF THE ITEMS DEPICTED ON THIS DRAWING MAY BE COVERED BY CURRENT PATENTS OR PATENTS APPLIED FOR BY PHOENIX CLOSURES, INC.				DESCRIPTION: SHORT RIB / STACKABLE / MATTE TOP		
				DRAWN BY: TCS	DATE: 05.28.17	APPROVED BY:

SHALLOW SKIRTED CLOSURES

110-400-9640 S



MATERIAL	TOLERANCE
PP / PE	± 0.0175
PET	± 0.012
GLASS	± 0.024

NOTES: (UNLESS OTHERWISE SPECIFIED)		0	11.17.97	Released	BZ
1. ALL DIMENSIONS ARE IN INCHES.		REV	DATE	DESCRIPTION	BY
2. SEE CHART FOR DIMENSIONAL TOLERANCE.		TOLERANCE	PITCH/TPI	200 / 5	TURNS
THIS OR FACSIMILE THEREOF IS THE EXCLUSIVE PROPERTY OF PHOENIX AND MAY NOT BE REPRODUCED WITHOUT THE EXPRESSED WRITTEN CONSENT OF PHOENIX. SOME OR ALL OF THE ITEMS DEPICTED ON THIS DRAWING MAY BE COVERED BY CURRENT PATENTS OR PATENTS APPLIED FOR BY PHOENIX.		.X	±0.1	DRAWN	BEZ
		.XX	±0.02	DATE	11.17.97
		.XXX	±0.010	SCALE	8 : 1
				Per Chart	REV
				110 - 400 - FINISH	
					0