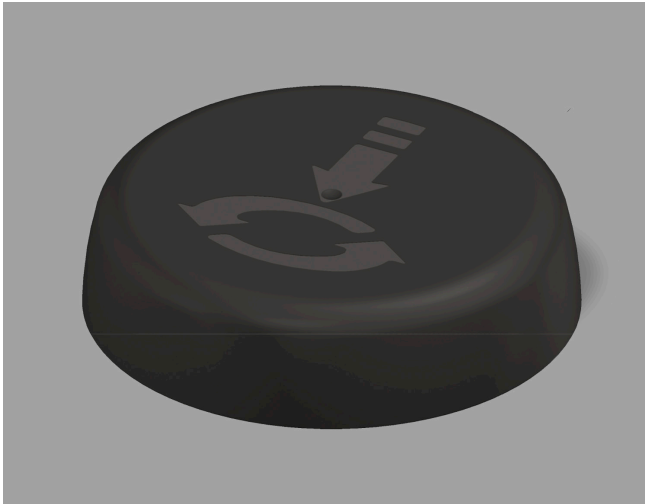


CHILD-RESISTANT CLOSURES

70-BAY-SMPT Horizon



Specifications:

DIAMETER 70 mm
THREAD PROFILE BAY
NECK FINISH 70-BAY
CLOSURE TOP Embossed
CLOSURE SIDEWALL Smatte™
MATERIAL PP

PACKAGING & FREIGHT INFORMATION

PACK TYPE	PCS/CTN	CTNS/PALT	PCS/PALT	CTN WT*	PALT WT*	FRT CLASS
Bulk	725	15	10,875	TBD ⁽²⁾	TBD ⁽²⁾	TBD ⁽²⁾
CARTON DIMENSIONS: 24 x 16 x 15			PALLET DIMENSIONS: 48 x 40 x 50			

(2) Lined Closures *Approximate

MARKETS

Cannabis, Personal Care & Cosmetics, Vitamins, Nutraceuticals, and Nutritional Powders.

OPTIONS

Available in white, standard, and custom colors. Lined with SureSeal for child-resistance feature. Can be lined with heat induction liners.

CLOSURE BENEFITS

- Patented Smatte™ finish for a sleek look
- Popular for the cannabis market
- Embossed with pictogram
- Offers child-resistance feature
- Horizon 1-piece CRC
- Needs an adult-sized hand to push down and open

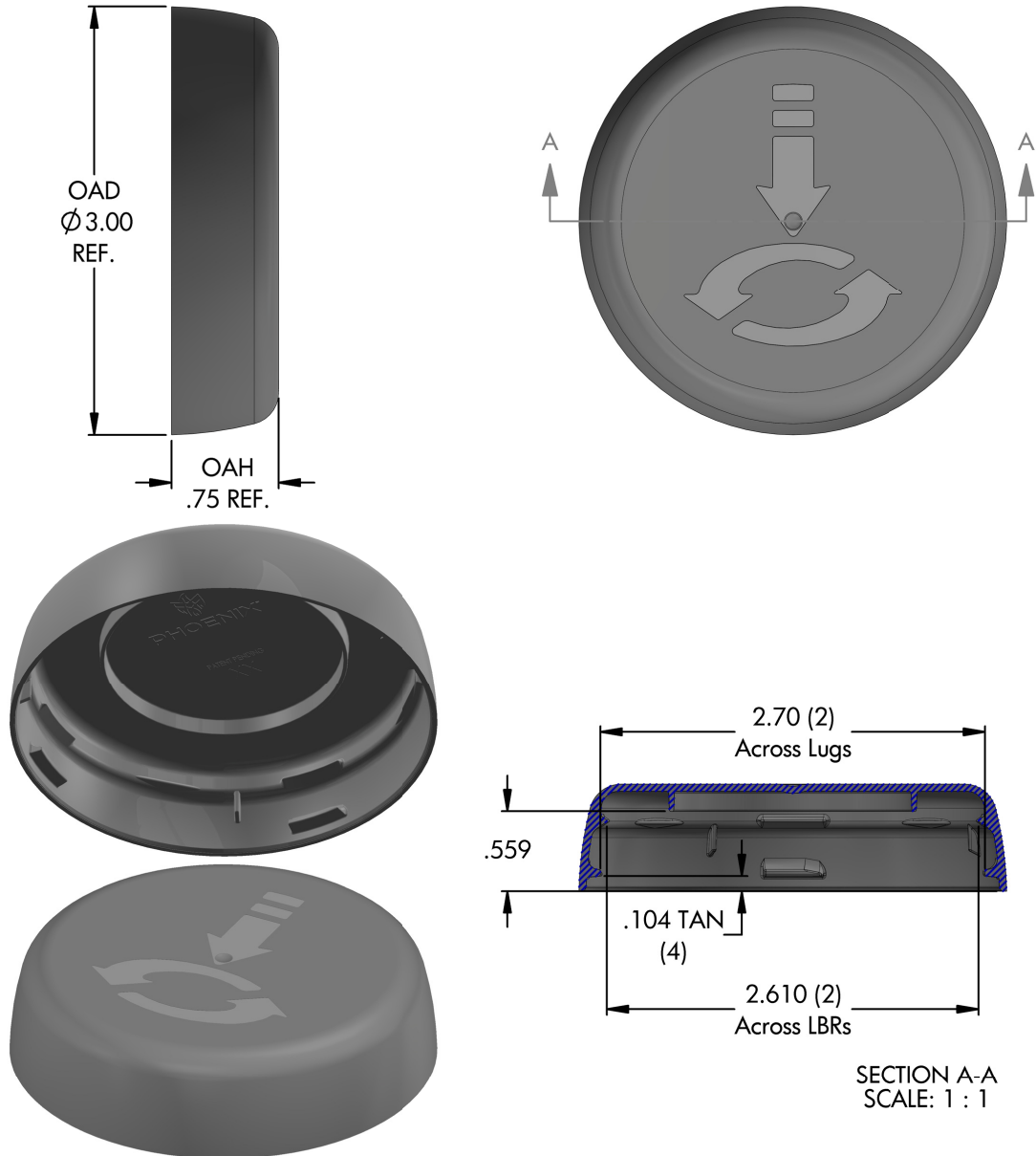


PHXPKG.COM

P 630 420 4750 E greatpkg@phxpkg.com
975 Meridian Lake Drive • Aurora, IL 60504

CHILD-RESISTANT CLOSURES

70-BAY-SMPT Horizon



NOTES: (UNLESS OTHERWISE SPECIFIED)
 1. ALL DIMENSIONS ARE IN INCHES.
 2. SEE CHART FOR DIMENSIONAL TOLERANCE.

THIS OR FACSIMILE THEREOF IS THE EXCLUSIVE PROPERTY OF PHOENIX AND MAY NOT BE REPRODUCED WITHOUT THE EXPRESSED WRITTEN CONSENT OF PHOENIX. SOME OR ALL OF THE ITEMS DEPICTED ON THIS DRAWING MAY BE COVERED BY CURRENT PATENTS OR PATENTS APPLIED FOR BY PHOENIX.

6	06.13.19	Add Versions (SMBK, SMTX, SMPT)	TS
REV	DATE	DESCRIPTION	BY
TOLERANCE	PITCH/TPI	N / A	TURNS N/A
.X	+0.1	DRAWN TCS	DATE 12.19.16
.XX	+0.02	SCALE	1 : 1
.XXX	+0.010	070 - BAY - SMPT L 6	



PHXPKG.COM

P 630 420 4750 E greatpkg@phxpkg.com
 975 Meridian Lake Drive • Aurora, IL 60504