

## CHILD-RESISTANT CLOSURES

# 33-CRC-STTX A Vista™



## Specifications:

**DIAMETER** 33 mm

**THREAD PROFILE** CRC

**NECK FINISH** 33-CRC

**CLOSURE TOP**

**CLOSURE SIDEWALL** Wide Ribbed

**MATERIAL** PP

## PACKAGING & FREIGHT INFORMATION

PACK TYPE	PCS/CTN	CTNS/PALT	PCS/PALT	CTN WT*	PALT WT*	FRT CLASS
Bulk	2,000	15	30,000	33 <sup>(1)</sup>	495 <sup>(1)</sup>	100 <sup>(1)</sup>
Bulk	2,000	15	30,000	36 <sup>(2)</sup>	537 <sup>(2)</sup>	100 <sup>(2)</sup>
<b>CARTON DIMENSIONS:</b> 24 x 16 x 15			<b>PALLET DIMENSIONS:</b> 48 x 40 x 50			

(1) Unlined Closures (2) Lined Closures \*Approximate

## MARKETS

Vitamins, Nutraceuticals, Pharmaceuticals, Supplements, Agricultural Products, Automotive Products, Household Chemicals, Cosmetics, Food Oil, Industrial Products, Cannabis, and Nutritional Powders.

## OPTIONS

Available in white, standard, and custom colors. Can be lined with a wide variety of liner systems including SureSeal (foam).

## CLOSURE BENEFITS

- Offers child-resistance feature
- Patented Vista™ technology
- Popular for vitamins & nutraceuticals
- Embossed with text instructions



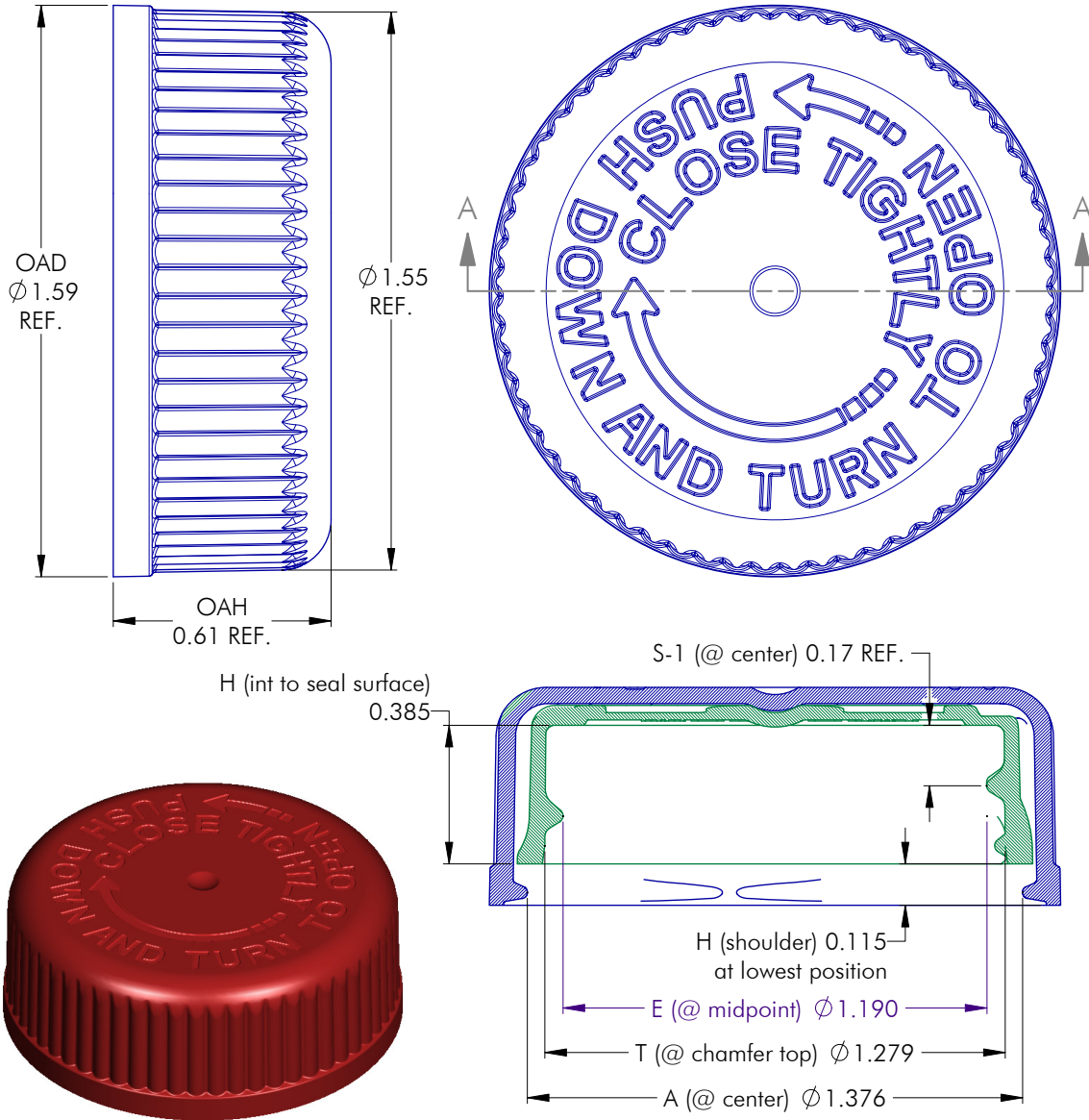
**PHOENIX™**

PHXPKG.COM

P 630 420 4750 E greatpkg@phxpkg.com  
1899 High Grove Lane Naperville, IL 60540

CHILD-RESISTANT CLOSURES

# 33-CRC-STTX A Vista™



NOTES: (UNLESS OTHERWISE SPECIFIED)  
 1. ALL DIMENSIONS ARE IN INCHES.  
 2. SEE CHART FOR DIMENSIONAL TOLERANCE.

THIS OR FACSIMILE THEREOF IS THE EXCLUSIVE PROPERTY OF PHOENIX AND MAY NOT BE REPRODUCED WITHOUT THE EXPRESSED WRITTEN CONSENT OF PHOENIX. SOME OR ALL OF THE ITEMS DEPICTED ON THIS DRAWING MAY BE COVERED BY CURRENT PATENTS OR PATENTS APPLIED FOR BY PHOENIX.

7	09.27.19	Update 'E' Dim. to Reflect Production	DN
REV	DATE	DESCRIPTION	BY
TOLERANCE	PITCH/TPI .167 / 6	TURNS 345°	MAT'L PP
.X ±0.1	DRAWN DMN	DATE 09.13.16	SCALE 5 : 2
.XX ±0.02	33 - CRC - STTX S		REV
.XXX ±0.010			7



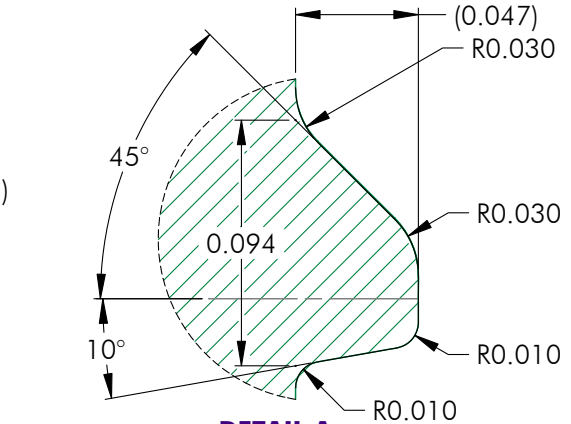
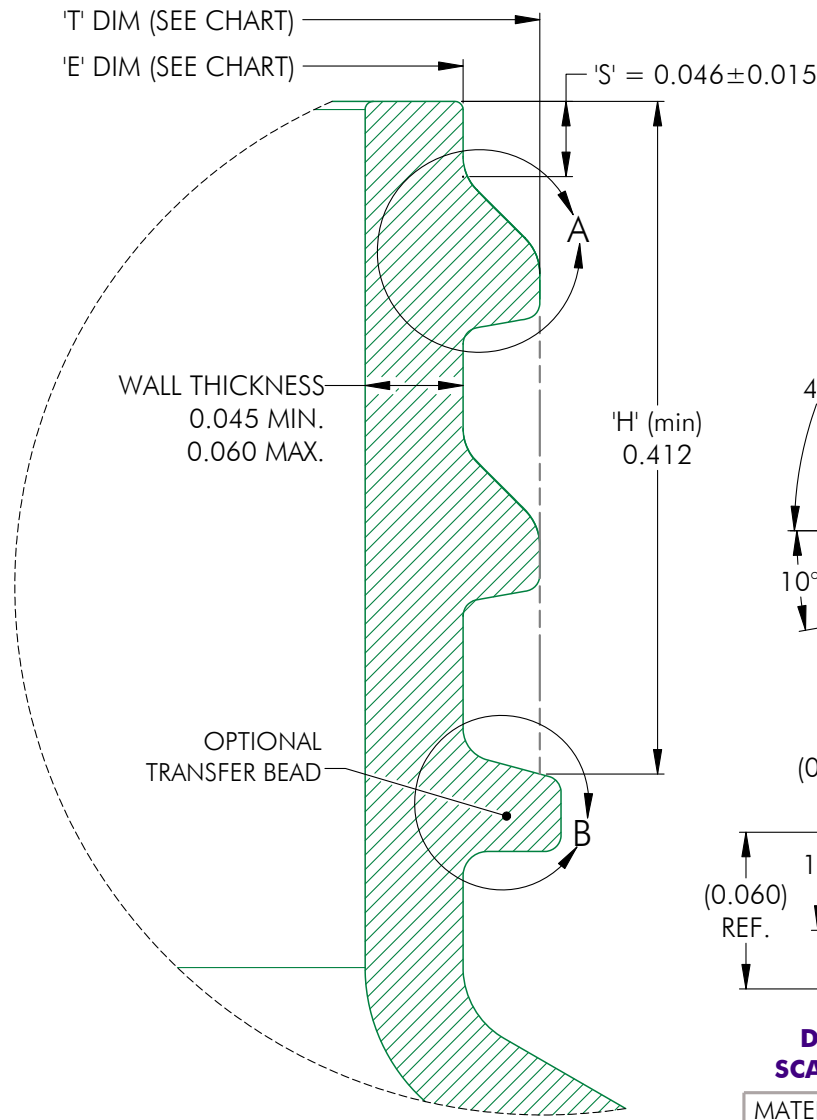
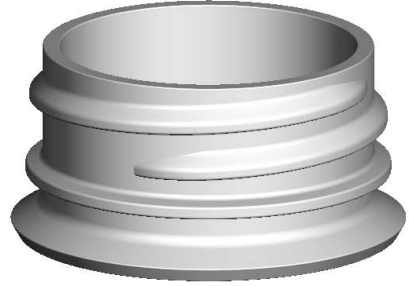
**PHOENIX™**

PHXPKG.COM

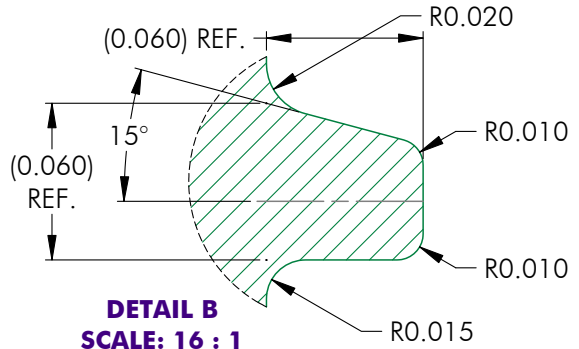
P 630 420 4750 E greatpkg@phxpkg.com  
 1899 High Grove Lane Naperville, IL 60540

SHALLOW SKIRTED CLOSURES

# 33-CRC-STTX A Vista™



**DETAIL A**  
SCALE: 16 : 1



**DETAIL B**  
SCALE: 16 : 1

MATERIAL	T (mean)	E (mean)	TOLERANCE
PP / PE	1.253	1.159	± 0.012
PET	1.257	1.163	± 0.008
GLASS	0.0000	0.0000	± 0.0000

NOTES: (UNLESS OTHERWISE SPECIFIED) 1. ALL DIMENSIONS ARE IN INCHES. 2. SEE CHART FOR DIMENSIONAL TOLERANCE.  THIS OR FACSIMILE THEREOF IS THE EXCLUSIVE PROPERTY OF PHOENIX AND MAY NOT BE REPRODUCED WITHOUT THE EXPRESSED WRITTEN CONSENT OF PHOENIX. SOME OR ALL OF THE ITEMS DEPICTED ON THIS DRAWING MAY BE COVERED BY CURRENT PATENTS OR PATENTS APPLIED FOR BY PHOENIX.	1	03.13.17	Update wall thickness to reflect Market	DN					
	REV	DATE	DESCRIPTION	BY					
	TOLERANCE	PITCH/TPI	.167 / 6	TURNS	1-1/8	MAT'L	PER CHART		
	.X	±0.1	DRAWN	DMN	DATE	03.13.17	SCALE	10 : 1	REV

**33 - 400 - FINISH**



**PHOENIX™**

PHXPKG.COM

P 630 420 4750 E greatpkg@phxpkg.com  
1899 High Grove Lane Naperville, IL 60540